

CHAPTER 12

DATA COLLECTION AND HISTORIC DISPLAYS

12.1. Data Logger.....	1
12.1.1. Settings	1
12.1.2. General Settings.....	2
12.1.3. Data Item Settings.....	5
12.1.4. Using LDF File to Save Logged Data	7
12.2. Displaying Logged Data Values Using Historic Data Tables.....	8
12.2.1. Basic Operations.....	8
12.2.2. Operation Options.....	8
12.2.3. Settings	8
12.2.4. General Settings.....	9
12.2.5. Data Item Settings.....	11
12.3. Displaying Logged Data Trend Using Historic Trend Graph	12
12.3.1. Basic Operations.....	12
12.3.2. Operation Options.....	12
12.3.3. Settings	12
12.3.4. General Settings.....	13
12.3.5. Curve Settings.....	15
12.3.6. Axis Settings.....	16
12.4. Displaying History of Predefined Events Using Historic Event Tables	18
12.4.1. Basic Operations.....	18
12.4.2. Operation Options.....	18
12.4.3. Settings	19
12.4.4. General Settings.....	20
12.4.5. Message Settings	22
12.5. Displaying Time Slice Data Profile Using Single Record Line Charts .	23
12.5.1. Basic Operations.....	23
12.5.2. Operation Options.....	24
12.5.3. Settings	24
12.5.4. General Settings.....	25
12.5.5. Pen Settings	27
12.5.6. Axis Settings.....	29

This chapter describes how to set up the data loggers for your application to collect data and how to configure the historic display objects to display the collected data.

12.1. Data Logger

A data logger can collect and store the values of a data block. You can specify what data block you want to log, determine the frequency of data sampling, choose the type of memory to save the logged data, and specify how to save the logged data to files.

You can create up to 16 data loggers for your application. The maximum size of the data block that can be sampled by a data logger is 128 words.

You can use function button to request the panel to clear logged data or save/load logged data (.ldf/.txt file). To know how to define a function button, please see [Section 5.4.1 Basic Operations](#) of function buttons.

To create a data logger, you may do one of the followings:

- 1) In the Project Manager tool window, right-click the Data Loggers node of the concerned panel application and select Add Data Logger.
- 2) In the menu bar, click Panel to bring up the Panel sub-menu. Click Data Logger in the Panel sub-menu to bring up the Data Logger pop-up menu. Select Add in the pop-up menu.

12.1.1. Settings

You can set up a data logger with the Data Logger dialog box. There are two ways to open the dialog box of a data logger:

- 1) In the Project Manager window, right-click the node of the desired data logger and select Properties.
- 2) In the menu bar, click Panel to bring up the Panel sub-menu. Click Data Logger in the Panel sub-menu to bring up the Data Logger pop-up menu. Select Properties in the pop-up menu to bring up the data logger list of the current panel application. Select the data logger in the list.

The Data Logger dialog box contains the following two pages:

- **General**

Described in [Section 12.1.2.](#)

- **Data Item**

Described in [Section 12.1.3.](#)



12.1.2. General Settings

Use the General page to define the general settings for a data logger. The following is an example of the General page.

The table below describes each property in the General page.

Property	Description
Name	The data logger's name. The maximum length of the name is 48 characters.
ID	The data logger's ID number. Select a number between 1 and 16. The number is unique among all data loggers of the panel application.
Use battery backed RAM	Check this option so the logging buffer of the data logger will be located in the battery backed RAM. The logged data will not be lost after power down if the battery backed RAM is used for the logging buffer. If this option is not selected, the logging buffer will be located in ordinary RAM and the data logger will clear the logging buffer whenever the target panel is powered up.
Sample Size	The size of the data to be sampled. The unit is word.
Number of Samples	Specifies the maximum number of samples that the logging buffer of the data logger can hold.
Logging Buffer Size	The size of the logging buffer. The unit is word. The formula to calculate the size is: Logging Buffer Size = Number of Samples * (Sample Size + 5)
Latest Sampled Data Word Address	You can use the addresses shown here to refer to the latest sampled data of the data logger for configuring screen objects and writing macros.
Read Address	Specifies the variable representing the data block to be sampled. Click to enter an address for this field. Click to select a tag for this field. The size of the data block is specified in the Sample Size field.

Continued

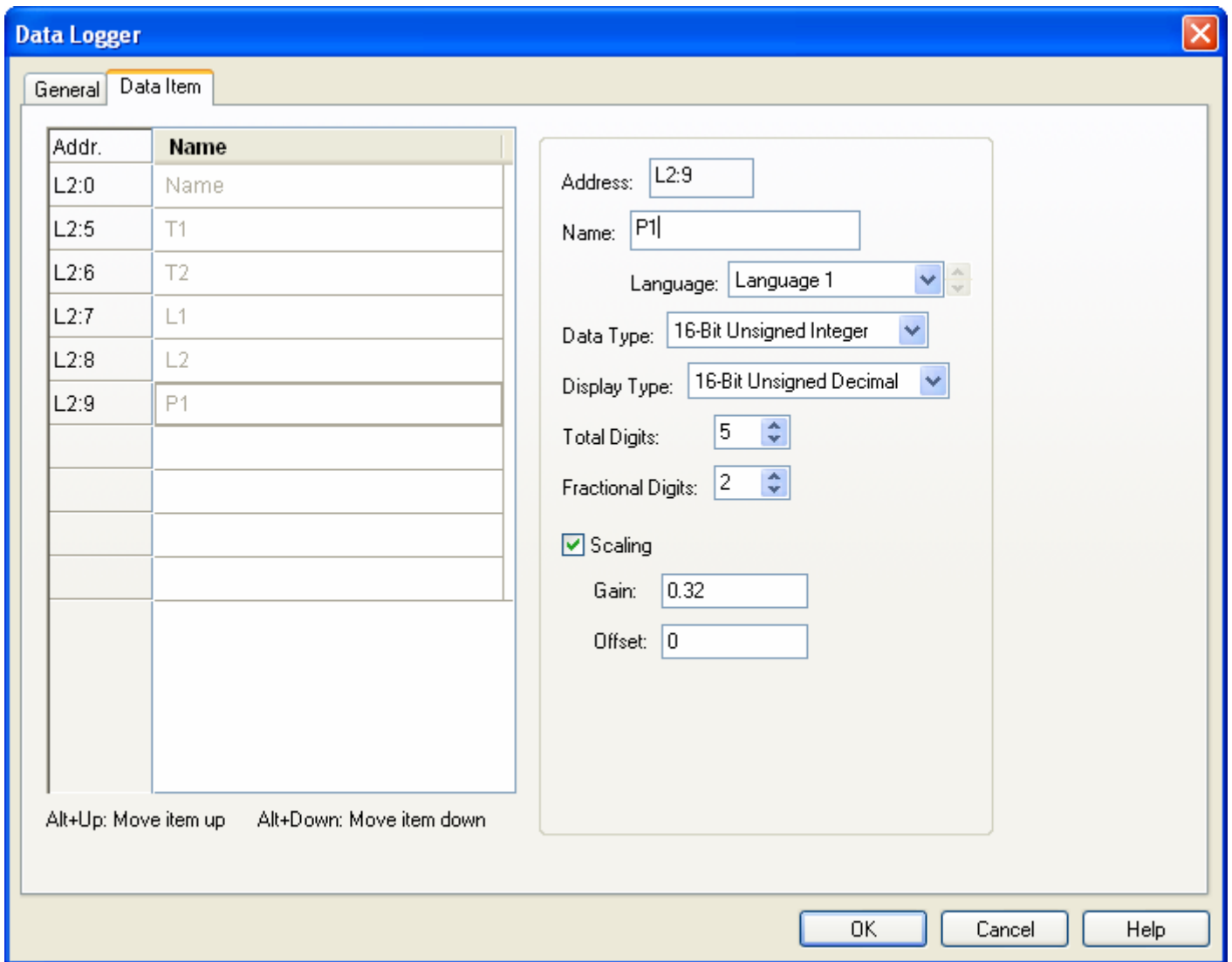
Property		Description	
Sampling Method	Timed	The data logger samples data periodically at a rate specified in the Interval field. You can specify an interval between 1 second and 65535 seconds for the Interval field. For example, if you want the data logger to sample data every 5 seconds, specify 5 for the Interval field.	
	Triggered	The data logger samples data once whenever the trigger bit specified in the Trigger Bit field changes from Off to On.	
	Clocked	The data logger samples data at fixed moments specified in the At Each field. There are six sets of fixed moments available for the At Each field.	
		At Each	Fixed Moments
		1x	Every minute at 0 second
		5x	The following moments of every hour: 00:00, 05:00, 10:00, 15:00, 20:00, 25:00, 30:00, 35:00, 40:00, 45:00, 50:00, 55:00
10x		The following moments of every hour: 00:00, 10:00, 20:00, 30:00, 40:00, 50:00	
15x		The following moments of every hour: 00:00, 15:00, 30:00, 45:00	
30x		The following moments of every hour: 00:00, 30:00	
60x	Every hour on the hour		
Timed (sub-second)	The data logger samples data periodically at a rate specified in the Interval field. You can select an interval between 0.1 second and 0.9 second for the Interval field. For example, if you want the data logger to sample data every 0.5 second, select 0.5 for the Interval field. The sub-second sampling requires high data acquisition performance. As there are many factors that can affect the performance, it is not guaranteed that the specified sampling rate can be attained.		
Load from .LDF File	The data logger does not sample data. It receives the data loaded from an LDF file.		
Sample Full Processing	Stop Sampling	Check the option if you want the data logger to stop sampling data when the logging buffer is full.	
	Notify	Check the option if you want the data logger to set the bit specified in the Bit field to On when the number of collected samples exceeds the limit specified in the Full Limit field.	
	Bit	Available when the Notify field is checked. Specifies the bit for the sample full notification. Click  to enter an address for this field. Click  to select a tag for this field.	
	Full Limit	Available when the Notify field is checked. Select a percentage as the full limit. When the ratio of collected samples to the maximum samples specified in the Number of Samples field exceeds the percentage, the data logger sets the bit specified in the Bit field to On.	
External Control	Clear Buffer	Check this option so the data logger can be controlled to clear its logging buffer by the trigger bit specified in the Trigger Bit field.	
	Trigger Bit	Available when the Clear Buffer option is checked. Select a trigger bit that will control the data logger to clear its logging buffer. The data logger clears its logging buffer when the trigger bit changes from Off to On.	
	Enable Sampling	Check this option so the data logger can be enabled and disabled by the enabling bit specified in the Enabling Bit field.	
	Enabling Bit	Available when the Enable Sampling option is checked. Select an enabling bit that will enable and disable the data logger. The data logger is enabled when the enabling bit is On.	

Continued

Property		Description															
Save Data to File	Save Data to File	Check this option so the data logger will write the newly collected data to a specified file periodically. Each time when the data logger performs this operation, it writes only the data that are not saved to a file before.															
	File Type	<p>The type of file to save the logged data.</p> <table border="1"> <thead> <tr> <th>File Type</th> <th>Description</th> </tr> </thead> <tbody> <tr> <td>.CSV/.TXT</td> <td>The logged data are saved in CSV or text format. You can use any text editor to view the logged data. Most importantly you can use Microsoft Excel to import the logged data from such files directly.</td> </tr> <tr> <td>.LDF</td> <td>The logged data are saved in a binary format than can only be used by a data logger that has exactly the same data definition. This file type allows you to view and operate historic data loaded from files.</td> </tr> </tbody> </table>	File Type	Description	.CSV/.TXT	The logged data are saved in CSV or text format. You can use any text editor to view the logged data. Most importantly you can use Microsoft Excel to import the logged data from such files directly.	.LDF	The logged data are saved in a binary format than can only be used by a data logger that has exactly the same data definition. This file type allows you to view and operate historic data loaded from files.									
File Type	Description																
.CSV/.TXT	The logged data are saved in CSV or text format. You can use any text editor to view the logged data. Most importantly you can use Microsoft Excel to import the logged data from such files directly.																
.LDF	The logged data are saved in a binary format than can only be used by a data logger that has exactly the same data definition. This file type allows you to view and operate historic data loaded from files.																
Operation Type	Specifies how to open a file to save the logged data.																
	<table border="1"> <thead> <tr> <th>Operation Type</th> <th>Description</th> </tr> </thead> <tbody> <tr> <td>Create</td> <td>Creates a new file with the specified filename to save the logged data.</td> </tr> <tr> <td>Append or Create</td> <td>If the specified file exists, appends the logged data to that file; otherwise creates a new file with the specified filename to save the logged data.</td> </tr> </tbody> </table>		Operation Type	Description	Create	Creates a new file with the specified filename to save the logged data.	Append or Create	If the specified file exists, appends the logged data to that file; otherwise creates a new file with the specified filename to save the logged data.									
Operation Type	Description																
Create	Creates a new file with the specified filename to save the logged data.																
Append or Create	If the specified file exists, appends the logged data to that file; otherwise creates a new file with the specified filename to save the logged data.																
Time to Save	<p>Specifies the period to save the logged data. There are nine kinds of period available:</p> <table border="1"> <thead> <tr> <th>Available Period</th> </tr> </thead> <tbody> <tr> <td>Every hour on the hour</td> </tr> <tr> <td>Every 8 hours (00:00, 08:00, 16:00)</td> </tr> <tr> <td>Every 12 hours (00:00, 12:00)</td> </tr> <tr> <td>Every day at 00:00</td> </tr> <tr> <td>Every day at 08:00</td> </tr> <tr> <td>Every day at 12:00</td> </tr> <tr> <td>Every Sunday at 00:00</td> </tr> <tr> <td>Every Monday at 00:00</td> </tr> <tr> <td>Every month's first day at 00:00</td> </tr> </tbody> </table>		Available Period	Every hour on the hour	Every 8 hours (00:00, 08:00, 16:00)	Every 12 hours (00:00, 12:00)	Every day at 00:00	Every day at 08:00	Every day at 12:00	Every Sunday at 00:00	Every Monday at 00:00	Every month's first day at 00:00					
Available Period																	
Every hour on the hour																	
Every 8 hours (00:00, 08:00, 16:00)																	
Every 12 hours (00:00, 12:00)																	
Every day at 00:00																	
Every day at 08:00																	
Every day at 12:00																	
Every Sunday at 00:00																	
Every Monday at 00:00																	
Every month's first day at 00:00																	
Filename	The filename or the prefix of the filename of the file to save the logged data. The extension name must be ".txt" when the File Type is ".TXT". The extension name must be ".ldf" when the File Type is ".LDF".																
Filename Suffix	<p>Available when the Operation Type is Create. This property guarantees that the created file has a unique name and no existing file will be overwritten. There are four kinds of filename suffix available as shown in the following table.</p> <table border="1"> <thead> <tr> <th>Filename Suffix</th> <th>Description</th> <th>Example</th> </tr> </thead> <tbody> <tr> <td>_YYMMDD_hhmmss</td> <td>YY: year (00~99) MM: month (01~12) DD: day (01~31) hh: hour (00~23) mm: minute (00~59) ss: second (00~59)</td> <td>Log_090423_102358 (Assume that the specified Filename is "Log", the current date is April 23, 2009, and the current time is 10:23:58.)</td> </tr> <tr> <td>_YYMMDD_hhmm</td> <td>See above</td> <td>Log_090423_1023</td> </tr> <tr> <td>_YYMMDD_hh</td> <td>See above</td> <td>Log_090423_10</td> </tr> <tr> <td>_YYMMDD</td> <td>See above</td> <td>Log_090423</td> </tr> </tbody> </table>		Filename Suffix	Description	Example	_YYMMDD_hhmmss	YY: year (00~99) MM: month (01~12) DD: day (01~31) hh: hour (00~23) mm: minute (00~59) ss: second (00~59)	Log_090423_102358 (Assume that the specified Filename is "Log", the current date is April 23, 2009, and the current time is 10:23:58.)	_YYMMDD_hhmm	See above	Log_090423_1023	_YYMMDD_hh	See above	Log_090423_10	_YYMMDD	See above	Log_090423
Filename Suffix	Description	Example															
_YYMMDD_hhmmss	YY: year (00~99) MM: month (01~12) DD: day (01~31) hh: hour (00~23) mm: minute (00~59) ss: second (00~59)	Log_090423_102358 (Assume that the specified Filename is "Log", the current date is April 23, 2009, and the current time is 10:23:58.)															
_YYMMDD_hhmm	See above	Log_090423_1023															
_YYMMDD_hh	See above	Log_090423_10															
_YYMMDD	See above	Log_090423															

12.1.3. Data Item Settings

Use the Data Item page to define the data items of the sampled data for a data logger. The following is an example of the Data Item page.



The Data Item page contains two parts. The left part is the data item list that shows the address and name of each data item in a row. The right part shows the properties of the selected data item. To select a data item, click the row of that data item in the data item list. The following table describes each property of the data item.

Property	Description
Address	You can use the address shown here to refer to the latest sampled value of the data item.
Name	Specifies the name of the data item for the language specified in the Language field.
Language	Select a language so you can view and edit the name of the data item for that language.
Data Type	The data type of the data item. The supported data types include: 16-Bit Unsigned Integer, 32-Bit Unsigned Integer, 16-Bit Signed Integer, 32-Bit Signed Integer, 16-Bit BCD, 32-Bit BCD, 32-Bit Floating Point, ASCII String, and Unicode String. Note that Unicode String is supported for PanelExpress only.

Continued

Property	Description																									
Display Type	<p>The display type for the value of the data item. The following table shows the available display types for each data type.</p> <table border="1"> <thead> <tr> <th>Data Type</th> <th>Available Display Types</th> </tr> </thead> <tbody> <tr> <td>16-Bit Unsigned Integer</td> <td>16-Bit Unsigned Decimal, 16-Bit Hexadecimal, 16-Bit Octal</td> </tr> <tr> <td>32-Bit Unsigned Integer</td> <td>32-Bit Unsigned Decimal, 32-Bit Hexadecimal, 32-Bit Octal</td> </tr> <tr> <td>16-Bit Signed Integer</td> <td>16-Bit Signed Decimal</td> </tr> <tr> <td>32-Bit Signed Integer</td> <td>32-Bit Signed Decimal</td> </tr> <tr> <td>16-Bit BCD</td> <td>16-Bit Unsigned Decimal</td> </tr> <tr> <td>32-Bit BCD</td> <td>32-Bit Unsigned Decimal</td> </tr> <tr> <td>32-Bit Floating Point</td> <td>32-Bit Floating Point</td> </tr> <tr> <td>ASCII String</td> <td>ASCII String</td> </tr> <tr> <td>Unicode String</td> <td>Unicode String</td> </tr> </tbody> </table>	Data Type	Available Display Types	16-Bit Unsigned Integer	16-Bit Unsigned Decimal, 16-Bit Hexadecimal, 16-Bit Octal	32-Bit Unsigned Integer	32-Bit Unsigned Decimal, 32-Bit Hexadecimal, 32-Bit Octal	16-Bit Signed Integer	16-Bit Signed Decimal	32-Bit Signed Integer	32-Bit Signed Decimal	16-Bit BCD	16-Bit Unsigned Decimal	32-Bit BCD	32-Bit Unsigned Decimal	32-Bit Floating Point	32-Bit Floating Point	ASCII String	ASCII String	Unicode String	Unicode String					
Data Type	Available Display Types																									
16-Bit Unsigned Integer	16-Bit Unsigned Decimal, 16-Bit Hexadecimal, 16-Bit Octal																									
32-Bit Unsigned Integer	32-Bit Unsigned Decimal, 32-Bit Hexadecimal, 32-Bit Octal																									
16-Bit Signed Integer	16-Bit Signed Decimal																									
32-Bit Signed Integer	32-Bit Signed Decimal																									
16-Bit BCD	16-Bit Unsigned Decimal																									
32-Bit BCD	32-Bit Unsigned Decimal																									
32-Bit Floating Point	32-Bit Floating Point																									
ASCII String	ASCII String																									
Unicode String	Unicode String																									
Total Digits	Specifies the number of digits to be displayed for the value of the data item.																									
Fractional Digits	<p>Specifies how to display the fractional part for the value of the data item. When the Display Type is 32-bit Floating Point, this property specifies the number of fractional digits to be displayed. When the Display Type is not 32-bit Floating Point, this property specifies not only the number of fractional digits to be displayed but also the number of least significant digits to be displayed as the fractional part. With this feature, an integer can be shown as a fixed point number.</p> <p>Example:</p> <table border="1"> <thead> <tr> <th>Display Type</th> <th>Total Digits</th> <th>Fractional Digits</th> <th>Sampled Value</th> <th>Displayed Value</th> </tr> </thead> <tbody> <tr> <td>32-bit Floating Point</td> <td>4</td> <td>2</td> <td>12.34</td> <td>12.34</td> </tr> <tr> <td>32-bit Floating Point</td> <td>4</td> <td>2</td> <td>123.4</td> <td>23.40</td> </tr> <tr> <td>16-bit Signed Decimal</td> <td>5</td> <td>2</td> <td>12345</td> <td>123.45</td> </tr> <tr> <td>16-bit Signed Decimal</td> <td>5</td> <td>2</td> <td>-5</td> <td>-0.05</td> </tr> </tbody> </table>	Display Type	Total Digits	Fractional Digits	Sampled Value	Displayed Value	32-bit Floating Point	4	2	12.34	12.34	32-bit Floating Point	4	2	123.4	23.40	16-bit Signed Decimal	5	2	12345	123.45	16-bit Signed Decimal	5	2	-5	-0.05
Display Type	Total Digits	Fractional Digits	Sampled Value	Displayed Value																						
32-bit Floating Point	4	2	12.34	12.34																						
32-bit Floating Point	4	2	123.4	23.40																						
16-bit Signed Decimal	5	2	12345	123.45																						
16-bit Signed Decimal	5	2	-5	-0.05																						
Scaling	<p>Check this option if you want the value of the data item to be displayed in a scaled manner. The following is the scaling formula:</p> $\text{DisplayedValue} = \text{SampledValue} * \text{Gain} + \text{Offset}$ <p>Note: The <i>Gain</i> and <i>Offset</i> are 32-bit floating point numbers. They have at most 6 significant digits. The rounding and truncation errors may happen.</p>																									
Gain	Available when the Scaling option is checked. Specifies the <i>Gain</i> used in the scaling formula.																									
Offset	Available when the Scaling option is checked. Specifies the <i>Offset</i> used in the scaling formula.																									

12.1.4. Using LDF File to Save Logged Data

The LDF files allow you to save logged data in files and view the data later. Hence the size of battery backed RAM or the buffer sizes of the data loggers will not limit the size of historical data you want to collect.

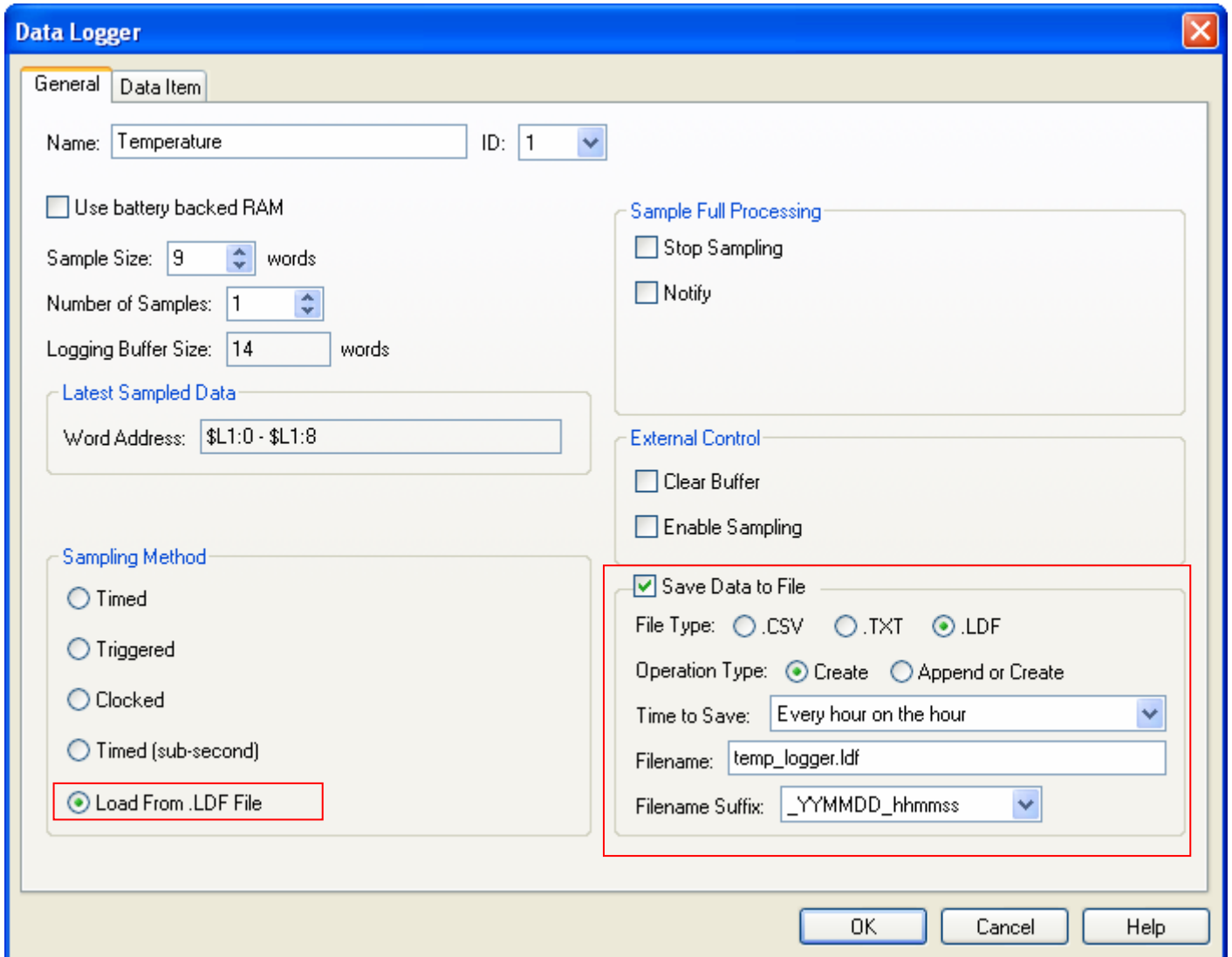
There are three ways to write the logged data of a data logger to an LDF file:

- 1) You can use a function button to perform “Copy Logged Data To .LDF File”. The button writes all the logged data of the specified data logged to an LDF file.
- 2) You can use the Command Block to request this operation.
- 3) You can configure a data logger to write its collected data to an LDF file automatically with preset time interval.

To view the logged data of an LDF file, you need to load the data of that LDF file into a data logger first. A data logger is able to receive the data from an LDF file only when:

- 1) The definitions of the data items of the LDF file and the data logger are identical, and
- 2) The number of samples of the LDF file is not greater than the number of samples of the data logger.

The viewing objects for an LDF file should be configured for the data logger that is able to receive the data from that LDF file.



12.2. Displaying Logged Data Values Using Historic Data Tables

12.2.1. Basic Operations

Use the following steps to create a historic data table:

- 1) Click Historic Data Table icon in the Object toolbar, or select Historic Data Table in the Object sub-menu.
- 2) Move the cursor to the screen on which you want to create the object.
- 3) Click at the desired position on the screen to place the new object.

You can use a historic data table to list the values of the data collected by a data logger.

Date	Time	T1	T2	T3	P1	P2	P3	V1	V2	V3
05/03/09	08:51:39	344.9	379.4	69.0	215.8	163.2	152.7	126.4	115.8	100.0
05/03/09	08:51:34	931.3	1000.3	931.3	236.9	221.1	200.0	184.2	163.2	173.7
05/03/09	08:51:29	931.3	1000.3	1414.2	336.9	310.5	284.2	284.2	289.5	305.3
05/03/09	08:51:24	1655.6	1931.6	1517.7	352.6	336.9	315.8	321.1	321.1	315.8
05/03/09	08:51:19	1414.2	1655.6	1241.7	321.1	247.4	242.1	231.6	231.6	242.1
05/03/09	08:51:14	1241.7	1241.7	1034.8	268.4	247.4	221.1	200.0	194.8	179.0
05/03/09	08:51:09	896.8	931.3	896.8	247.4	215.8	200.0	179.0	168.5	179.0
05/03/09	08:51:04	655.3	724.3	758.8	210.6	210.6	179.0	184.2	173.7	173.7

The above is an example of the historic data table. The first row is the title row. It displays the title of each column. The other rows display one data record per row. You can create scroll button groups or scroll bars to scroll the contents. The titles of data columns are the names of data items defined in the Data Item page of the Data Logger dialog box.

12.2.2. Operation Options

The following operation option can be added to a historic data table. Select and set the option in the Historic Data Table dialog box.

Options	Description
Visibility Control	You can show and hide a historic data table by a specified bit or the current user level. Select and set this option in the Visibility page.

12.2.3. Settings

You can set up a historic data table with the Historic Data Table dialog box. There are three ways to open the dialog box of an object:

- 1) Double-click the object.
- 2) Right-click the object to bring up the Object pop-up menu. Select Properties in the pop-up menu.
- 3) In the Object List window, double-click the row that shows the information of the object.

You can complete all the settings of a historic data table in the Historic Data Table dialog box. This dialog box contains the following three pages.

- **General**

Described in [Section 12.2.4.](#)

- **Data Item**

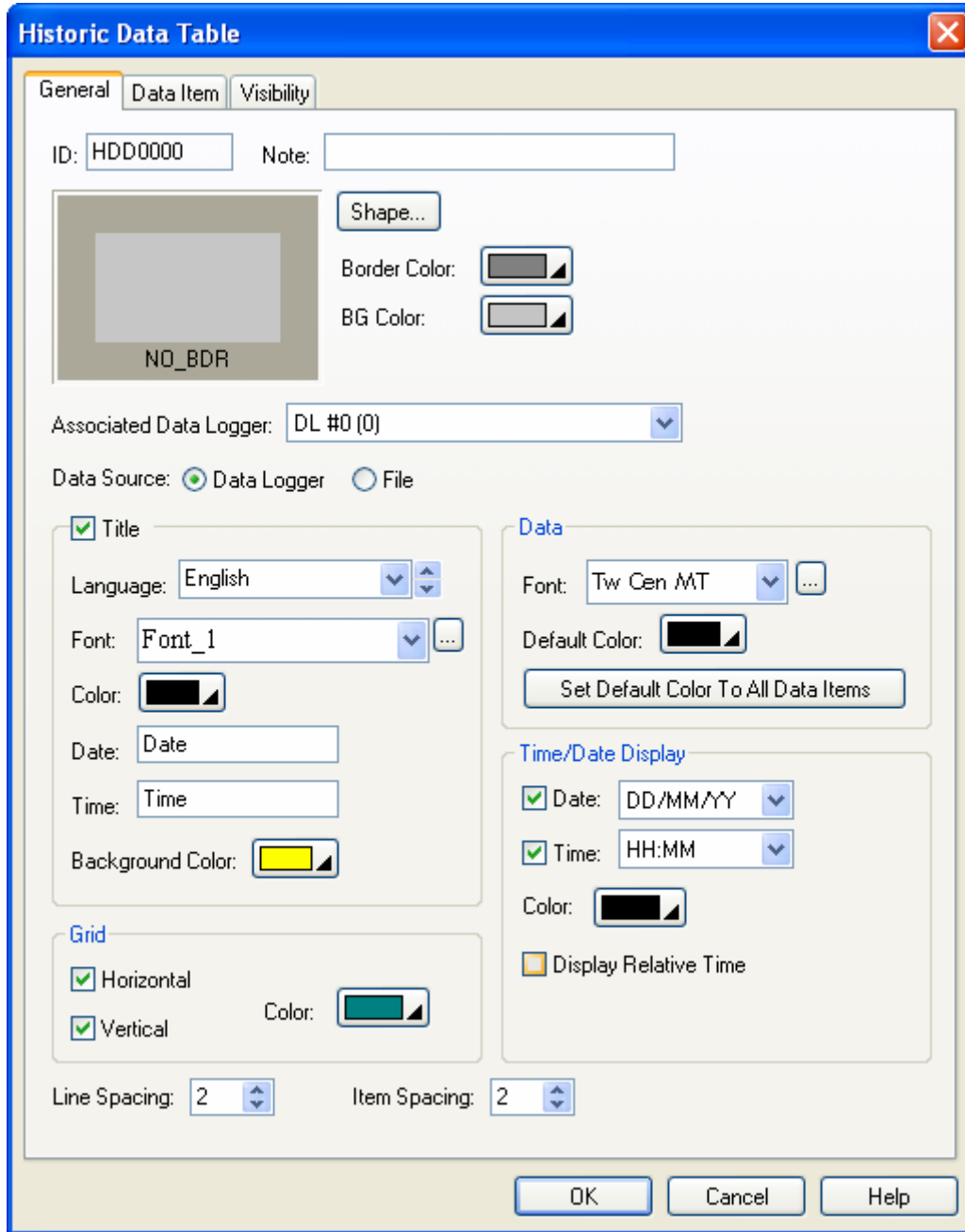
Described in [Section 12.2.5.](#)

- **Visibility**

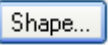
Described in [Section 4.4.6.](#)

12.2.4. General Settings

This section describes how to define the general settings for a historic data table. The following is an example of the General page.



The following table describes each property in the General page.

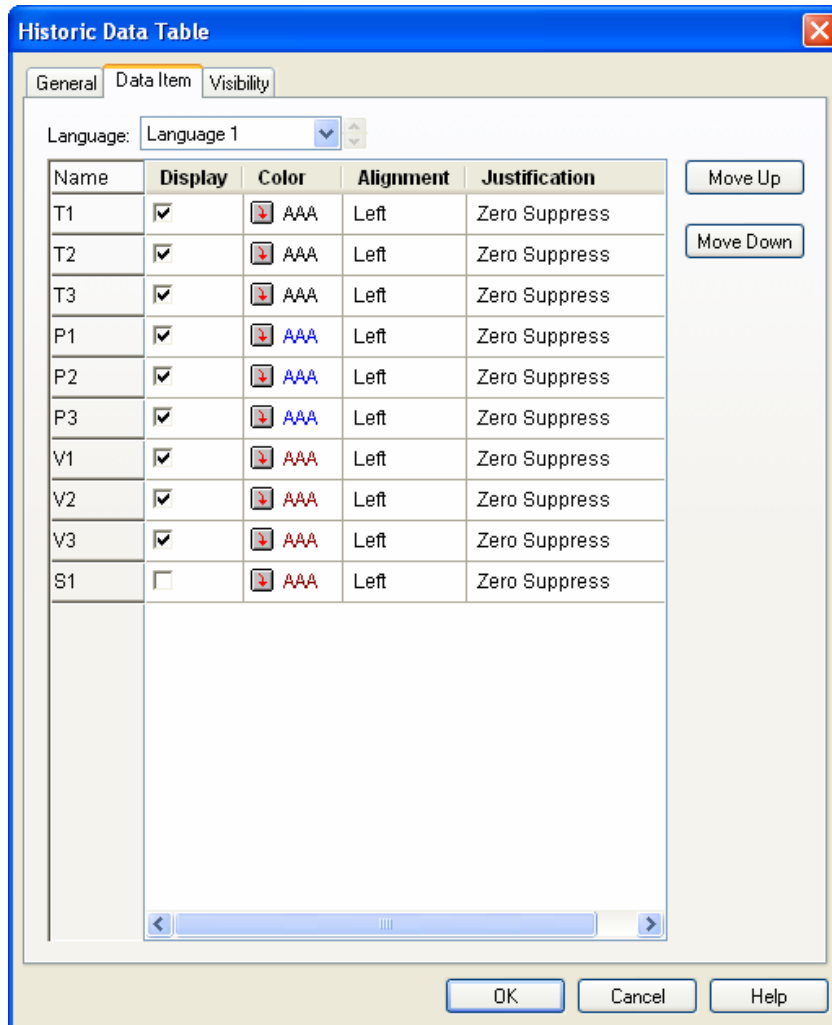
Property	Description
ID	The object's identifier. It is generated when the object is created and is unchangeable. The identifier is unique within the screen where the object is on. The format of the ID's for the historic data tables is HDDnnnn.
Note	You can type a note for the object.
Shape settings	For details about the following properties, Section 4.3.4 Setting up the Shape of an Object.  , Border Color, BG Color

Continued

Property		Description
Associated Data Logger		Select the data logger whose collected data is to be displayed by the object.
Data Source		<p>Select data logger or file as the source of the collected data. This new feature allows you to display historic data that are stored in files.</p> <p>There are two data sources you can select for Historic Trend Graphs, Historic Data Tables, and Single Record Line Charts.</p> <p>When "Data Logger" is selected as the data source for an object of such kinds, that object displays the sampled data stored in the logging buffer of the associated data logger.</p> <p>When "File" is selected as the data source for an object of such kinds, that object displays the sampled data stored in the specified file buffer.</p> <p>One HMI can have up to 16 file buffers and each file buffer is identified by an unique number between 0 and 15. You can create a function button to load the sampled data stored in a file. 1) Select "Load Logged Data From File" as the operation of that function button. 2) Select the file extension type. Both CSV and TXT are supported now. 3) Specify the associated data logger. 4) Specify the file buffer to save the loaded data. 5) Specify the size of the file buffer. The size is the maximum number of samples that the file buffer can hold.</p>
File Buffer ID		Specify the File Buffer ID if the data source is a file. To specify a file buffer ID for a file, you can use Load Logged Data From File operation of the function button. Please see Section 5.4 Performing Built-in Function Using Function Buttons for details.
Title	Title	Select this option if you want the object to display a title row.
	Language	Select a language so you can view and edit the settings of the title row for that language.
	Font	Select a font for the title text.
	Color	Select a color for the title text.
	Date	Specifies the title for the Date column.
	Time	Specifies the title for the Time column.
	Background Color	Select a color for the background of the title row.
Grid	Vertical	Check this option if you want the object to have vertical grids.
	Horizontal	Check this option if you want the object to have horizontal grids.
	Color	Select a color for the grids.
Data	Font	Select a font for displaying data.
	Default Color	Select a color as the default color for displaying data.
	Set Default Color to All Data Items	Click this button to set the colors of all the data items to the Default Color.
Time/Date Display	Date	Check this option if you want the object to display the Date column. You need to select a format for displaying the date.
	Time	Check this option if you want the object to display the Time column. You need to select a format for displaying the time.
	Color	Select a color to displaying Time/Date.
	Display Relative Time	Check this option if you want the object to display a relative measure of time.
Line Spacing		Specifies the extra space in pixels for two adjacent rows in the table.
Item Spacing		Specifies the extra space for every column in the table.

12.2.5. Data Item Settings

This section describes how to define the display format for the sampled values of each data item. The following is an example of the Data Item page.



The following table describes each property in the Data Item page.

Property		Description							
Language		Select a language so you can view and edit the settings for that language.							
Row #n of the property table	Name	The name of data item #n. The data item names are defined in the Data Item page of the Data Logger dialog box.							
	Display	Check this option if you want the object to display data item #n.							
	Color	Select a color for displaying data item #n.							
	Alignment	The alignment for displaying data item #n. There are three types of alignment: Left, Center, and Right.							
	Justification	The justification for displaying data item #n. There are three types of justification: <table border="1" style="width: 100%; margin-top: 5px;"> <thead> <tr> <th>Option</th> <th>Description</th> </tr> </thead> <tbody> <tr> <td>Zero Suppress</td> <td>The leading digits will not display when they are 0.</td> </tr> <tr> <td>Leading Zeros</td> <td>All digits will display.</td> </tr> <tr> <td>Leading Spaces</td> <td>The leading digits will display as blank character when they are 0.</td> </tr> </tbody> </table>	Option	Description	Zero Suppress	The leading digits will not display when they are 0.	Leading Zeros	All digits will display.	Leading Spaces
Option	Description								
Zero Suppress	The leading digits will not display when they are 0.								
Leading Zeros	All digits will display.								
Leading Spaces	The leading digits will display as blank character when they are 0.								

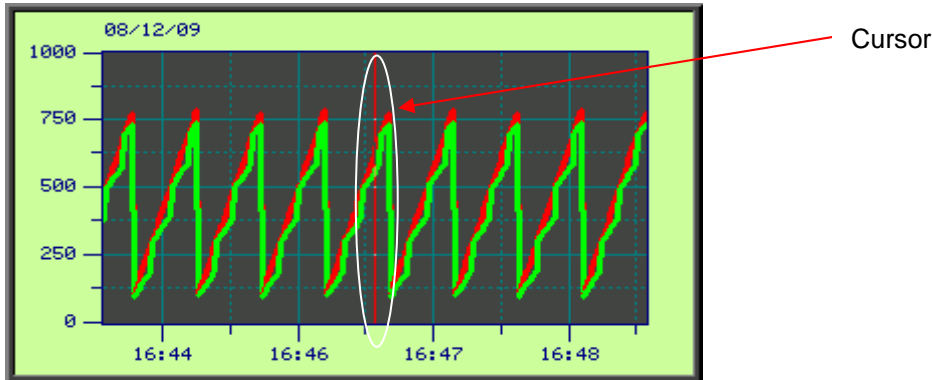
12.3. Displaying Logged Data Trend Using Historic Trend Graph

12.3.1. Basic Operations

Follow the steps below to create a historic trend graph:

- 1) Click Historic Trend Graph icon in the Object toolbar, or select Historic Trend Graph in the Object sub-menu.
- 2) Move the cursor to the screen on which you want to create the object.
- 3) Click at the desired position on the screen to place the new object.

You can use a Historic Trend Graph to display the values of the data collected by a data logger as a trend graph.



A historic trend graph can display up to 16 curves. The above is an example of the historic trend graph with two curves. A historic trend graph can provide a cursor for you to estimate the value in the desired time

12.3.2. Operation Options

The following operation option can be added to a historic trend graph. Select and set the option in the Historic Trend Graph dialog box.

Options	Description
Visibility Control	You can show and hide a historic trend graph by a specified bit or the current user level. Select and set this option in the Visibility page.

12.3.3. Settings

You can set up a historic trend graph with the Historic Trend Graph dialog box. There are three ways to open the dialog box of an object:

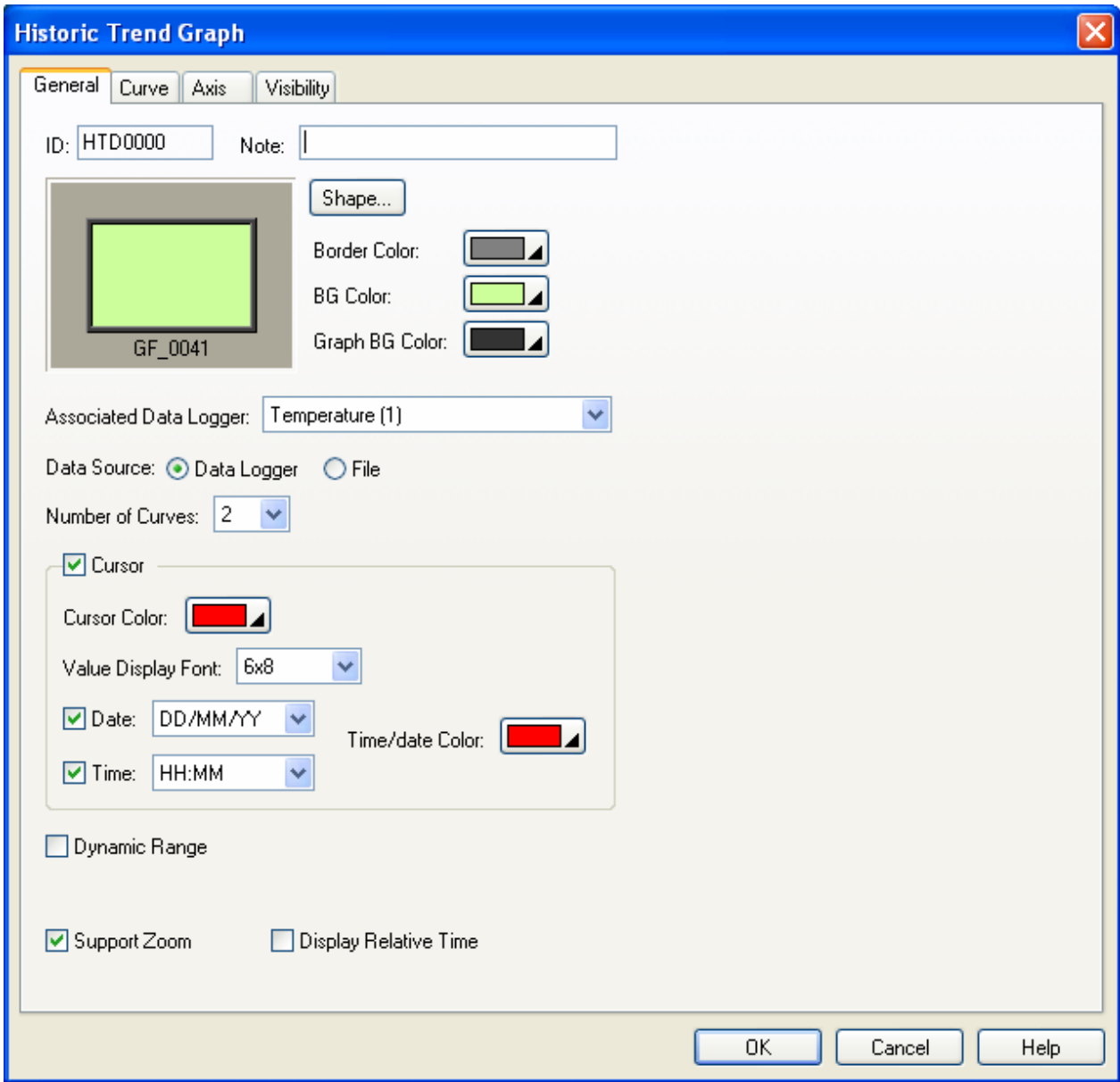
- 1) Double-click the object.
- 2) Right-click the object to bring up the Object pop-up menu. Select Properties in the pop-up menu.
- 3) In the Object List window, double-click the row that shows the information of the object.

The Historic Trend Graph dialog box contains the following four pages:


- **General**
Described in [Section 12.3.4.](#)
- **Curve**
Described in [Section 12.3.5.](#)
- **Axis**
Described in [Section 12.3.6.](#)
- **Visibility**
Described in [Section 4.4.6.](#)

12.3.4. General Settings



This section describes how to define the general settings for a historic trend graph. The following is an example of the General page of the Historic Trend Graph property sheet.



The following table describes each property in the General page.

Property	Description
ID	The object's identifier. It is generated when the object is created and is unchangeable. The identifier is unique within the screen where the object is on. The format of the ID's for the historic trend graph is HTDnnnn.
Note	You can type a note for the object.
Shape settings	For details about the following properties, see Section 4.3.4 Setting up the Shape of an Object .  , Border Color, BG Color.
Graph BG color	Select a color for the background of the graph.
Associated Data Logger	Specifies the associated data logger.

Continued

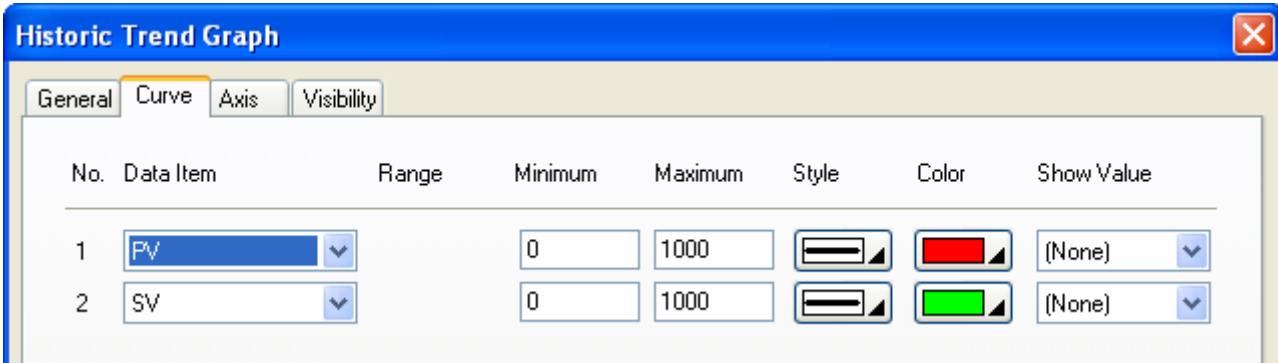
Property		Description																									
Data Source		Select data logger or file as the source of the collected data.																									
File Buffer ID		Specify the File Buffer ID if the data source is a file. To specify a file buffer ID for a file, you can use Load Logged Data From File operation of the function button. Please see Section 5.4 Performing Built-in Function Using Function Buttons for details.																									
Number of Curves		Specifies the number of curves.																									
Cursor	<Check box>	Check this option so the historic trend graph will display a cursor. You can touch and drag the cursor to the data point(s) that you want to select.																									
	Cursor Color	Select a color for the cursor.																									
	Value Display Font	Select a font for displaying the values of the selected data point(s).																									
	Date	Check this option if you want to display date on the left top of the historic trend graph object. You need to select a format for displaying the date. The format of how the date is displayed. There are 12 kinds of format available: dd/mm/yy, mm/dd/yy, yy/mm/dd, dd.mm.yy, mm.dd.yy, yy.mm.dd, dd-mm-yy, mm-dd-yy, yy-mm-dd, dd-MMM-yy, MMM-dd-yy, and yy-MMM-dd. Note: dd: 01~31 (day); mm: 01~12 (month); yy: 00~99 (year); MMM: JAN~DEC (month)																									
	Time	Check this option if you want the object to display the Time on the left top corner. You need to select a format for displaying the time.																									
	Time/Date Color	Select a color to displaying Time/Date.																									
Dynamic Range	Dynamic Range	When this option is selected, the following three ranges can be specified at runtime: <ul style="list-style-type: none"> The minimum and the maximum for the Y values of each curve The maximum time duration for X axis The minimum and maximum of the marks for the Y axis The data that specifies the above three ranges should be set and arranged correctly in a memory block called the dynamic range parameter block. You need to specify the dynamic range parameter block in the Dynamic Range Parameter Block field.																									
	Dynamic Range Parameter Block	Specifies the variable that stores the dynamic range parameter block for the historic trend graph when the Dynamic Range is selected. Click  to enter an address for this field. Click  to select a tag for this field. The following table shows the data arrangement of the parameter block. <table border="1" data-bbox="456 1368 1497 1984"> <thead> <tr> <th>Word</th> <th>Description</th> </tr> </thead> <tbody> <tr> <td>0,1</td> <td>The maximum time duration for time axis(X axis)</td> </tr> <tr> <td>2,3</td> <td>The number of major division for the time axis(X axis); 32-bit integer number. The minimum value is 1.</td> </tr> <tr> <td>4,5</td> <td>The number of sub-division for the time axis(X axis); 32-bit integer number. The minimum value is 1.</td> </tr> <tr> <td>6,7</td> <td>The minimum of the mark for the Y axis</td> </tr> <tr> <td>8,9</td> <td>The maximum of the mark for the Y axis</td> </tr> <tr> <td>10,11</td> <td>The minimum of Y values for curve #1</td> </tr> <tr> <td>12,13</td> <td>The maximum of Y values for curve #1</td> </tr> <tr> <td>14,15</td> <td>The minimum of Y values for curve #2</td> </tr> <tr> <td>16,17</td> <td>The maximum of Y values for curve #2</td> </tr> <tr> <td>...</td> <td>...</td> </tr> <tr> <td>70,71</td> <td>The minimum of Y values for curve #16</td> </tr> <tr> <td>72,73</td> <td>The maximum of Y values for curve #16</td> </tr> </tbody> </table>	Word	Description	0,1	The maximum time duration for time axis(X axis)	2,3	The number of major division for the time axis(X axis); 32-bit integer number. The minimum value is 1.	4,5	The number of sub-division for the time axis(X axis); 32-bit integer number. The minimum value is 1.	6,7	The minimum of the mark for the Y axis	8,9	The maximum of the mark for the Y axis	10,11	The minimum of Y values for curve #1	12,13	The maximum of Y values for curve #1	14,15	The minimum of Y values for curve #2	16,17	The maximum of Y values for curve #2	70,71	The minimum of Y values for curve #16	72,73
Word	Description																										
0,1	The maximum time duration for time axis(X axis)																										
2,3	The number of major division for the time axis(X axis); 32-bit integer number. The minimum value is 1.																										
4,5	The number of sub-division for the time axis(X axis); 32-bit integer number. The minimum value is 1.																										
6,7	The minimum of the mark for the Y axis																										
8,9	The maximum of the mark for the Y axis																										
10,11	The minimum of Y values for curve #1																										
12,13	The maximum of Y values for curve #1																										
14,15	The minimum of Y values for curve #2																										
16,17	The maximum of Y values for curve #2																										
...	...																										
70,71	The minimum of Y values for curve #16																										
72,73	The maximum of Y values for curve #16																										

Continued

Property	Description
Support Zoom	Check this option so zoom option will be supported at the runtime. You may use the function button to zoom in or zoom out the historic trend graph at the runtime. This field is available only when the Dynamic Range field is not checked.
Display Relative Time	Check this option if you want the object to display a relative measure of time.

12.3.5. Curve Settings

This section describes how to define the pens for the historic trend graph. The following is an example of the Pen page.



The following table describes each property in the Curve page.

Property	Description								
Data Item	Select a data item in the associated data logger for the curve.								
Range	Check this option so the minimum and the maximum for the Y values of the associated curve will be specified at runtime. This option is available only when the Dynamic Range option in the General page is checked.								
Minimum	The Y minimum of the data value of the associated curve. This property is available when the Dynamic Range option is not selected.								
Maximum	The Y maximum of the data value of the associated curve. This property is available when the Dynamic Range option is not selected.								
Style	Select a style for the trending curve.								
Color	Select a color for the trending curve.								
Show Value	Select one of the following methods for displaying the selected data point value. <table border="1" style="width: 100%; border-collapse: collapse;"> <thead> <tr> <th>Show Value</th> <th>Description</th> </tr> </thead> <tbody> <tr> <td>(None)</td> <td>Does not display the data point value.</td> </tr> <tr> <td>Original</td> <td>Displays the data point value without modification.</td> </tr> <tr> <td>Scaled</td> <td>Displays the corresponding Y axis value of the data point.</td> </tr> </tbody> </table>	Show Value	Description	(None)	Does not display the data point value.	Original	Displays the data point value without modification.	Scaled	Displays the corresponding Y axis value of the data point.
Show Value	Description								
(None)	Does not display the data point value.								
Original	Displays the data point value without modification.								
Scaled	Displays the corresponding Y axis value of the data point.								

12.3.6. Axis Settings

This section describes how to define the Time axis (X axis) and the Y axis for the historic trend graph.

The following table describes each property in the Axis page.

Property		Description
Time Axis (X Axis) – Time Range	Dynamic Range	Check this option if you want the maximum time duration to be controlled by the dynamic range parameter block of the associated object at runtime. This option is available only when the Dynamic Range option in the General page is checked.
	Unit	Select a unit for dynamic range. The field is only available when the Dynamic Range is checked.
	Day/Hour/Minute/Second	If the Dynamic Range is not checked in both general page and axis page, you need specify maximum time duration.

Continued

Property		Description						
Time Axis (X Axis)	Number of Major Divisions	The number of major divisions for the X axis. The minimum you can specify is one.						
	Number of Sub-divisions	The number of divisions between two adjacent major ticks. The minimum you can specify is one.						
	Show Ticks	Check this option if you want the X axis to have ticks.						
	Show Y-axis Grid	Select this option if you want the X axis to have vertical grids.						
	Grid Color	Select a color for the vertical grids.						
	Show Time	Check this option if you want to display time. You need to select a format for displaying the time.						
	Time Format	The format of how the time is displayed. There are two kinds of format available. <table border="1" data-bbox="555 656 1481 815"> <thead> <tr> <th>Format</th> <th>Description</th> </tr> </thead> <tbody> <tr> <td>HH:MM</td> <td>HH: 00~23 (hour); MM: 00~59 (minute)</td> </tr> <tr> <td>HH:MM:SS</td> <td>HH: 00~23 (hour); MM: 00~59 (minute); SS: 00~59 (second)</td> </tr> </tbody> </table>	Format	Description	HH:MM	HH: 00~23 (hour); MM: 00~59 (minute)	HH:MM:SS	HH: 00~23 (hour); MM: 00~59 (minute); SS: 00~59 (second)
	Format	Description						
HH:MM	HH: 00~23 (hour); MM: 00~59 (minute)							
HH:MM:SS	HH: 00~23 (hour); MM: 00~59 (minute); SS: 00~59 (second)							
Time/Date/Tick Color	Select a color for the X axis and its ticks.							
Y Axis	Number of Major Divisions	The number of major divisions for the Y axis. The minimum you can specify is one.						
	Number of Sub-divisions	The number of divisions between two adjacent major ticks. The minimum you can specify is one.						
	Show Ticks	Check this option if you want the Y axis to have ticks.						
	Show X-axis Grid	Select this option if you want the Y axis to have horizontal grids.						
	Grid Color	Select a color for the horizontal grids.						
Y Axis Mark	Show Marks	Check this option if you want the major ticks to have marks.						
	Font	The font of the marks.						
	Dynamic Range	Check this option if you want the minimum and maximum of the marks to be controlled by the dynamic range parameter block of the associated object at runtime.						
	Minimum	The minimum of the marks. You can specify a 32-bit signed integer.						
	Maximum	The maximum of the marks. You can specify a 32-bit signed integer.						
	Total Digits	The total digits to be displayed for the marks.						
	Fractional Digits	The number of fractional digits for the marks. For example, when the Maximum is 5000, the Total Digits is 4, and the Fractional Digits is 2, the mark for the Maximum will be 50.00.						
	Position	Select a position to locate the scale. The scale can be displayed on the left or on the right or on the both side.						
	Mark/Tick Color	Select a color for the marks and ticks.						

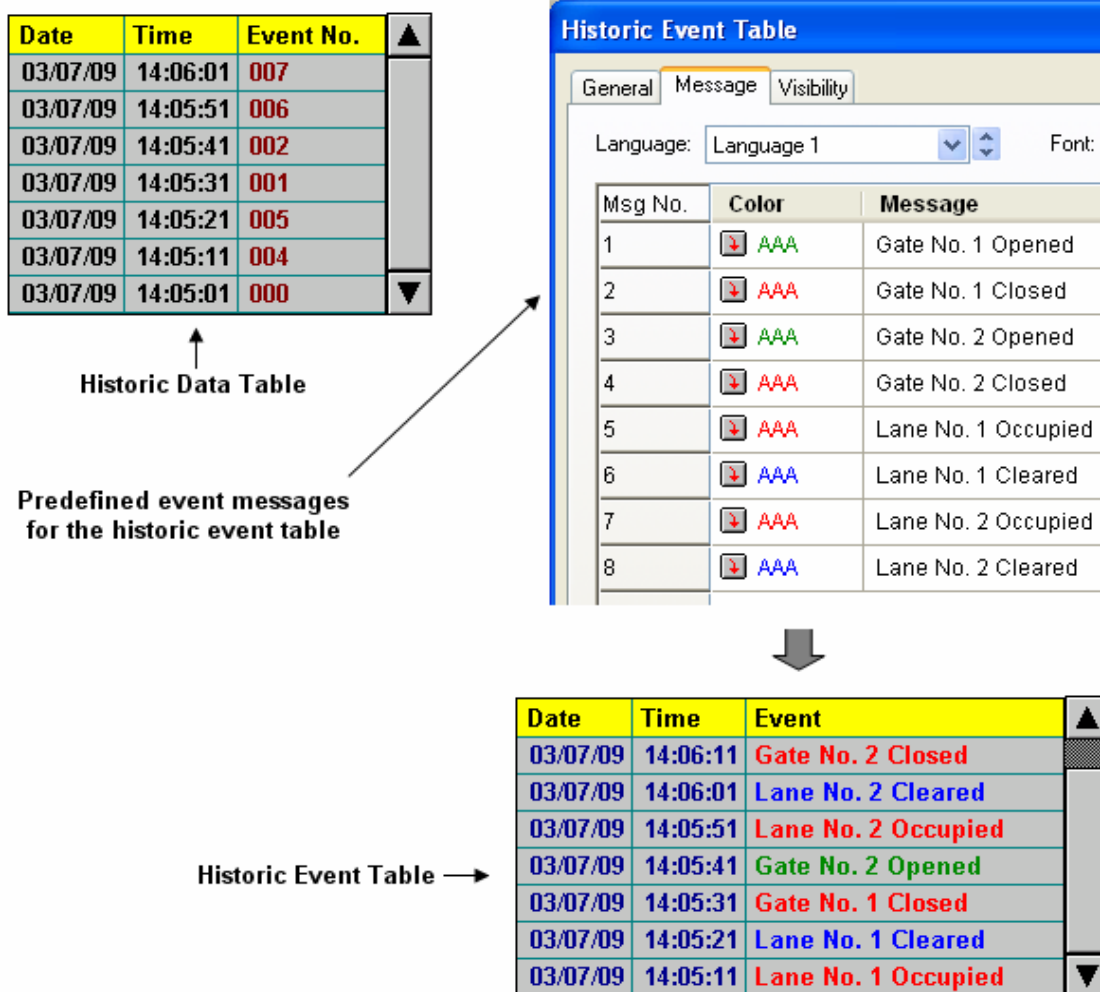
12.4. Displaying History of Predefined Events Using Historic Event Tables

12.4.1. Basic Operations

Follow the steps below to create a historic event table:

- 1) Click Historic Event Table icon in the Object toolbar, or select Historic Event Table in the Object sub-menu.
- 2) Move the cursor to the screen on which you want to create the object.
- 3) Click at the desired position on the screen to place the new object.

You can number the predefined events of your application, use a word in the controller or the target panel to store the number of the current event at runtime, and have a data logger in the target panel to collect the value of that word. This is a way to record the events of your application. You can use the historic event table to display the event history. Each message defined for the historic event table is associated with an event by the message/event number.



In the above example, the historic data table and the historic event table display the same historic data in different ways.

12.4.2. Operation Options

The following operation option can be added to a historic event table. Select and set the option in the Historic Event Table dialog box.

Options	Description
Visibility Control	You can show and hide a historic event table by a specified bit or the current user level. Select and set this option in the Visibility page.

12.4.3. Settings

You can set up a historic event table with the Historic Event Table dialog box. There are three ways to open the dialog box of an object:

- 1) Double-click the object.
- 2) Right-click the object to bring up the Object pop-up menu. Select Properties in the pop-up menu.
- 3) In the Object List window, double-click the row that displays the information of the object.

You can complete all the settings of a historic event table in the Historic Event Table dialog box. This dialog box contains the following three pages.

- **General**

Described in [Section 12.4.4.](#)

- **Message**

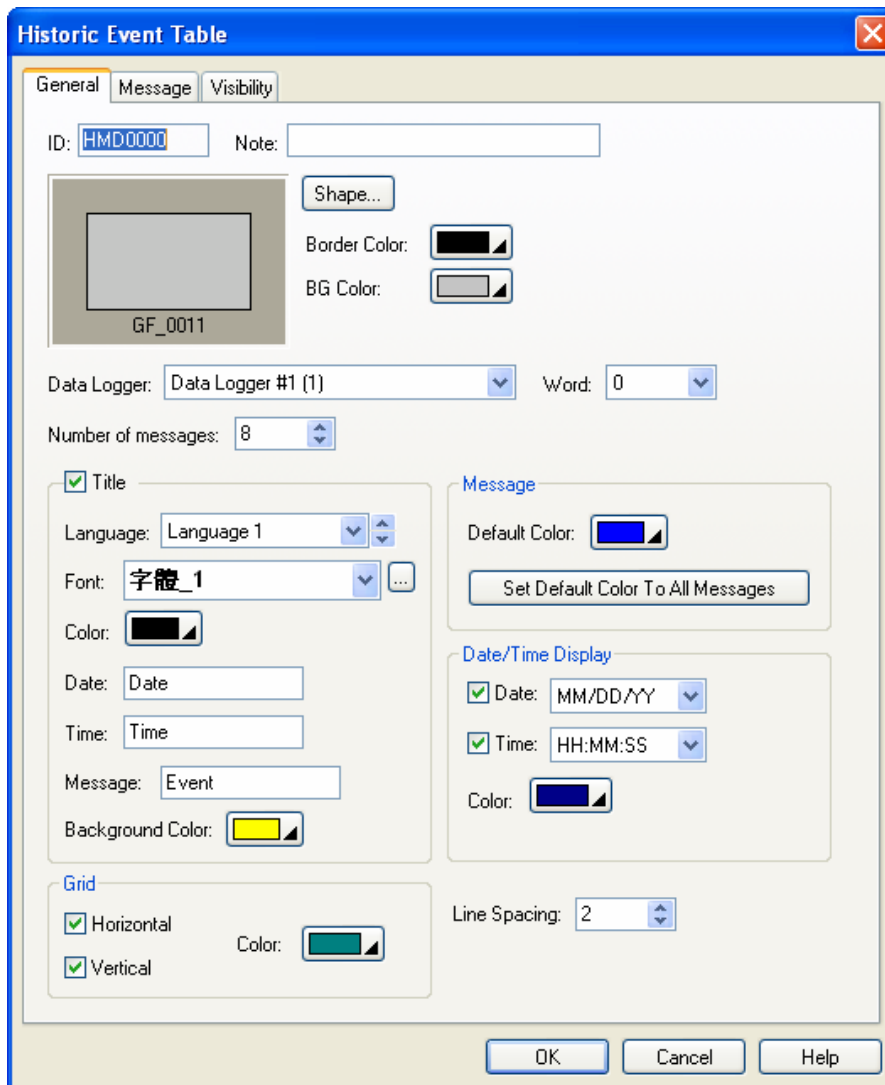
Described in [Section 12.4.5.](#)

- **Visibility**

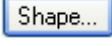
Described in [Section 4.4.6.](#)

12.4.4. General Settings

This section describes how to define the general settings for a historic event table. The following is an example of the General page.



The following table describes each property in the General page.

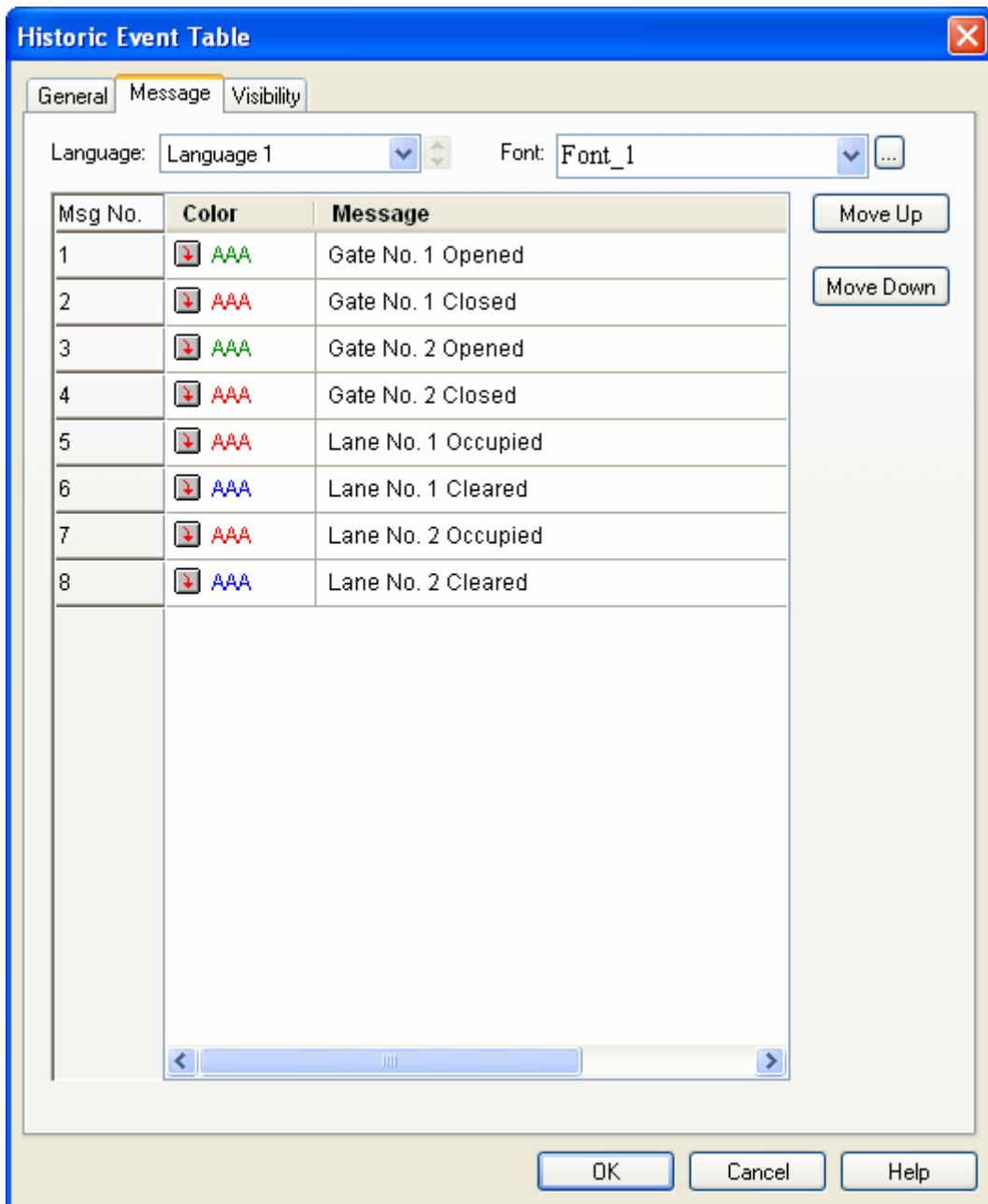
Property	Description
ID	The object's identifier. It is generated when the object is created and is unchangeable. The identifier is unique within the screen where the object is on. The format of the ID's for the historic event tables is HMDnnnn.
Note	You can type a note for the object.
Shape settings	For details about the following properties, see Section 4.3.4 Setting up the Shape of an Object .  , Border Color, BG Color
Data Logger	Specifies the associated data logger. The object will take a specified word in each of the data records collected by the data logger as the event number and displays a corresponding message for that number.
Word	Specifies the number of the word in each of the data records that stores the event number.
Number of messages	Specifies the number of event messages.

Continued

Property		Description
Title	Title	Select this option if you want to have a title row.
	Language	Select a language so you can view and edit the settings of the title row for that language.
	Font	Select a font for the title text.
	Color	Select a color for the text.
	Date	Specifies the title for the Date column.
	Time	Specifies the title for the Time column.
	Message	Specifies the title for the Message column.
	Background Color	Select a color for the background of the title row.
Grid	Vertical	Check this option if you want the object to display vertical grids.
	Horizontal	Check this option if you want the object to display horizontal grids.
	Color	Select a color for the grids.
Message	Font	Select a font for displaying messages.
	Default Color	Select a color as the default message color.
	Set Default Color To All Messages	Click this button to set the colors of all the messages to the Default Color.
Date/Time Display	Date	Check this option if you want the object to display the Date column. You need to select a format for displaying the date.
	Time	Check this option if you want the object to display the Time column. You need to select a format for displaying the time.
Line Spacing		Specifies the extra space in pixels for two adjacent rows in the table.

12.4.5. Message Settings

This section describes how to define the messages of the historic event table. The following is an example of the Message page.



The following table describes each property in the Message page.

Property		Description
Language		Select a language so you can view and edit the settings for that language.
Font		Select a font for displaying the messages.
No. 1~ N	Color	Select a color for displaying the message of the associated event.
	Message	Define the text message for the associated event.

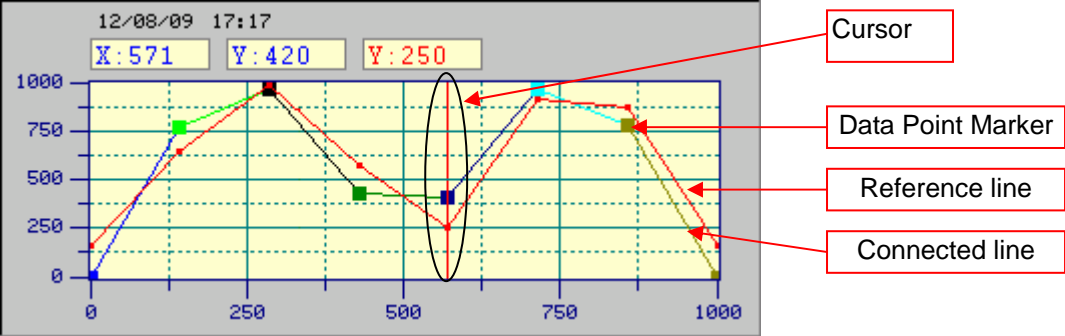
12.5. Displaying Time Slice Data Profile Using Single Record Line Charts

12.5.1. Basic Operations

Use the following steps to create a single record line chart:

- 1) Click Single Record Line Chart icon in the Object toolbar, or select Single Record Line Chart in the Object sub-menu.
- 2) Move the cursor to the screen on which you want to create the object.
- 3) Click at the desired position on the screen to place the new object.

You can use a single record line chart to display the values of the data collected by a data logger as a line chart.



A single record line chart can display up to 255 data points. The above is an example of the single record line chart with 8 data points. A single record line chart can provide a cursor for you to estimate the value in the desired pointer.

12.5.2. Operation Options

The following operation option can be added to a historic trend graph. Select and set the option in the Historic Trend Graph dialog box.

Options	Description
Visibility Control	You can show and hide a historic trend graph by a specified bit or the current user level. Select and set this option in the Visibility page.

12.5.3. Settings

You can set up a single record line chart with the Single Record Line Chart dialog box. There are three ways to open the dialog box of an object:

- 1) Double-click the object.
- 2) Right-click the object to bring up the Object pop-up menu. Select Properties in the pop-up menu.
- 3) In the Object List window, double-click the row that displays the information of the object.

The Single Record Line Chart dialog box contains the following four pages:

- **General**

Described in [Section 12.5.2.](#)

- **Pen**

Described in [Section 12.5.3.](#)

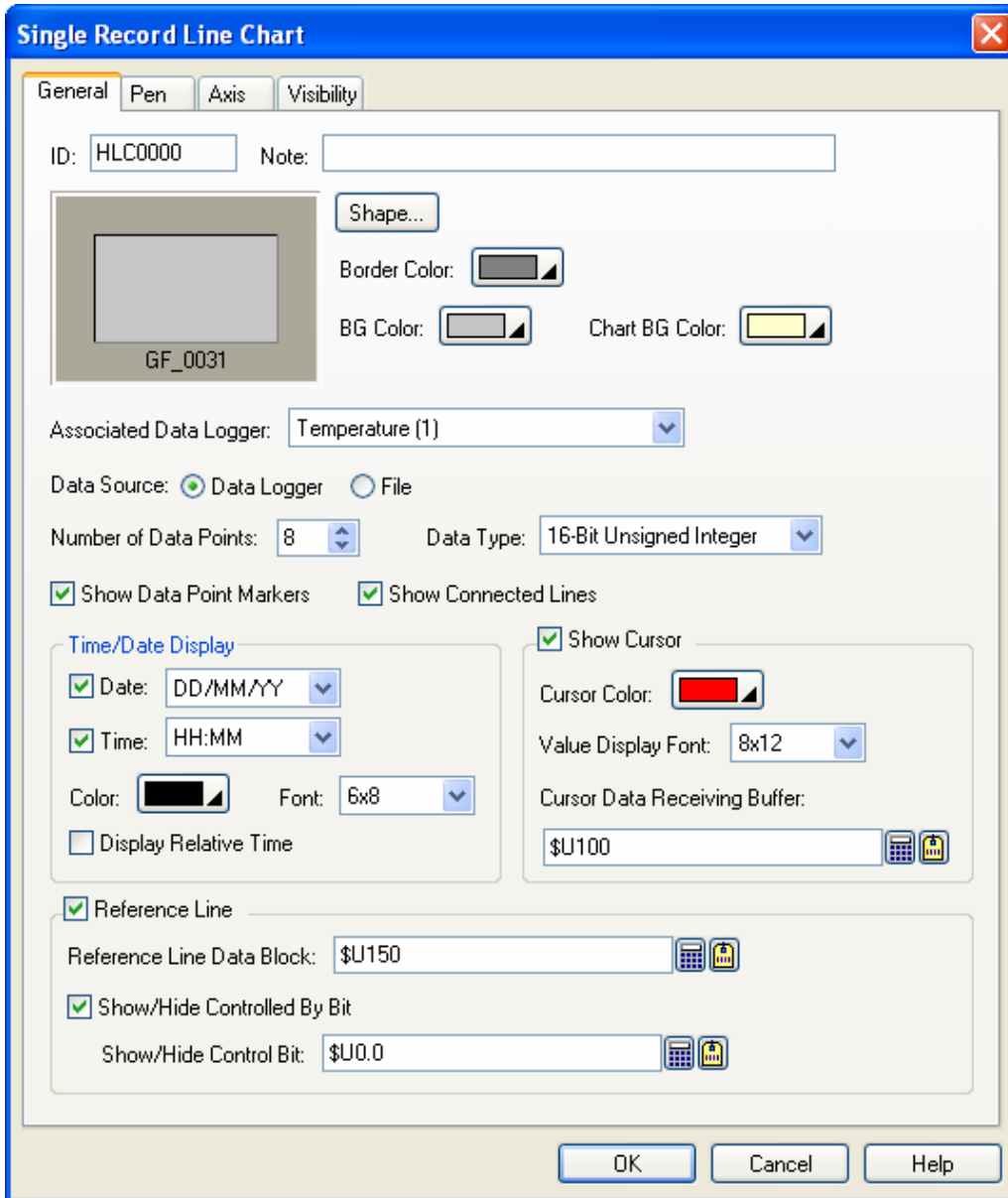
- **Axis**

Described in [Section 12.5.4.](#)

- **Visibility**

Described in [Section 4.3.6.](#)







12.5.4. General Settings



The following table describes each property in the General page.

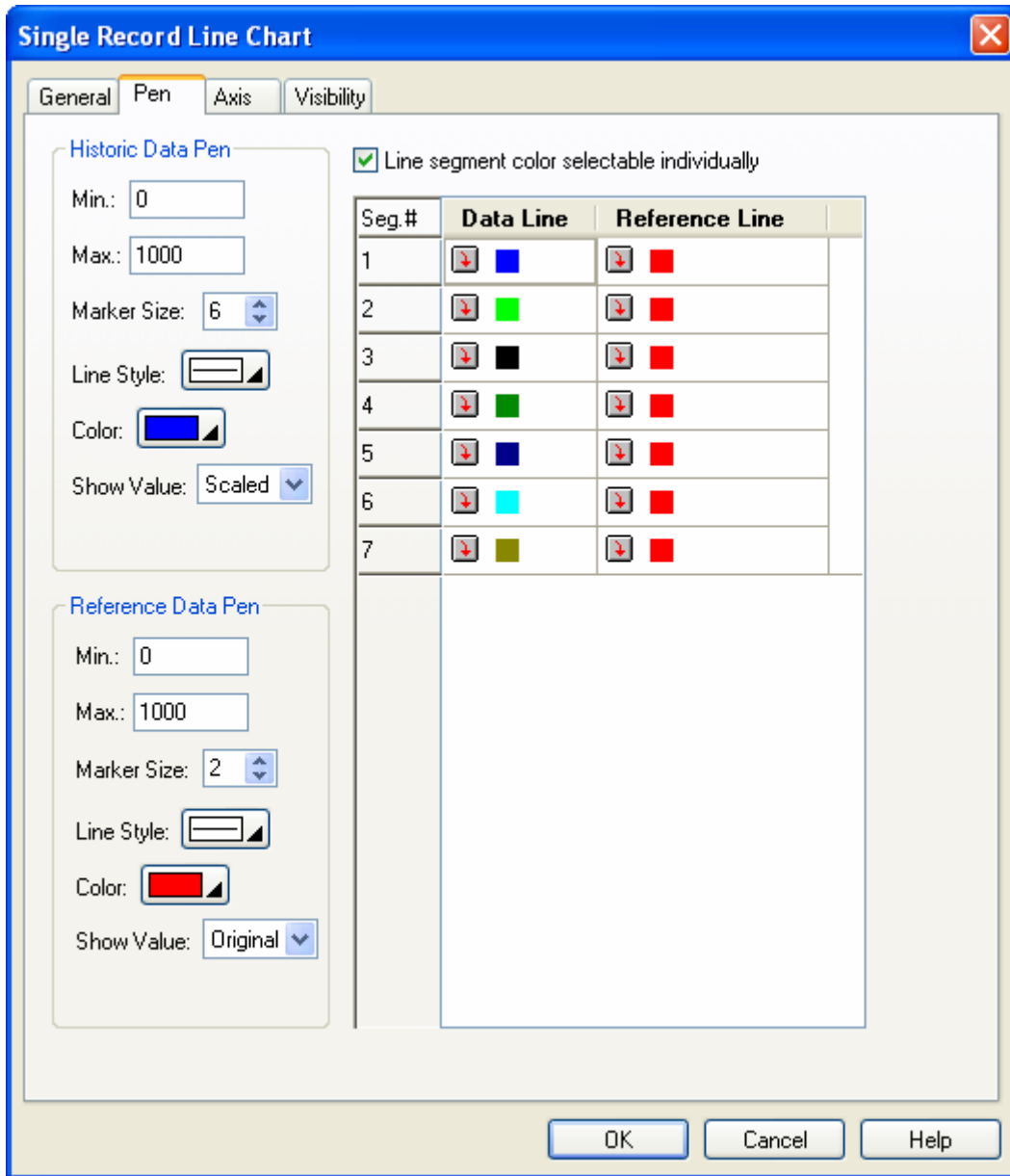
Property	Description
ID	The object's identifier. It is generated when the object is created and is unchangeable. The identifier is unique within the screen where the object is on. The format of the ID's for the Single Record Line Charts is HLCnnnn.
Note	You can type a note for the object.
Shape settings	For details about the following properties, see Section 4.3.4 Setting up the Shape of an Object . Shape... , Border Color, BG Color
Associated Data Logger	Specifies the associated data logger.
Data Source	Select data logger or file as the source of the collected data.
File Buffer ID	Specify the File Buffer ID if the data source is a file. To specify a file buffer ID for a file, you can use Load Logged Data From File operation of the function button. Please see Section 5.4 Performing Built-in Function Using Function Buttons .for details.

Continued

Property		Description
Number of Data Points		Specifies the number of data points.
Data Type		The data type of the data logger. The supported data types include: 16-Bit Unsigned Integer, 32-Bit Unsigned Integer, 16-Bit Signed Integer, 32-Bit Signed Integer, 16-Bit BCD, 32-Bit BCD, 32-Bit Floating Point, 16-Bit Signed BCD (LMB), 32-Bit Signed BCD (LMB), 16-Bit Signed BCD (LMD), and 32-Bit Signed BCD (LMD).
Show Data Point Markers		Check this option so the single record line chart will display all the data point markers.
Show Connected Lines		Check this option so the single record line chart will display the connected lines.
Time/Date Display	Date	Check this option if you want the object to display the Date column. You need to select a format for displaying the date.
	Time	Check this option if you want the object to display the Time column. You need to select a format for displaying the time.
	Color	Select a color for the text.
	Font	Select a font for the title text.
	Display Relative Time	Check this option if you want the object to display a relative measure of time.
Show Cursor	<Check Box>	Check this option so the single record line chart will display a cursor. You can touch and drag the cursor to the data point(s) that you want to select.
	Cursor Color	Select a color for the cursor.
	Value Display Font	Select a font for displaying the values of the selected data point(s).
	Cursor Data Receiving Buffer	The variable whose data is to be read and displayed the cursor data. Click  to enter an address for this field. Click  to select a tag for this field.
Reference Line	<Check Box>	Check this option so the single record line chart will display a reference line.
	Reference Line Data Block	The variable whose data is to be read and displayed the reference data. Click  to enter the word address. Click  to enter the word tag.
	Show/Hide Controlled By Bit	Check this option if you want to show or hide the reference line controlled by the specified bit.
	Show/Hide Control Bit	Specifies the bit that controls the reference line show/hide. Click  to enter the bit address. Click  to enter the bit tag.

12.5.5. Pen Settings

This section describes how to define the pens for the line charts. The following is an example of the Pen page.



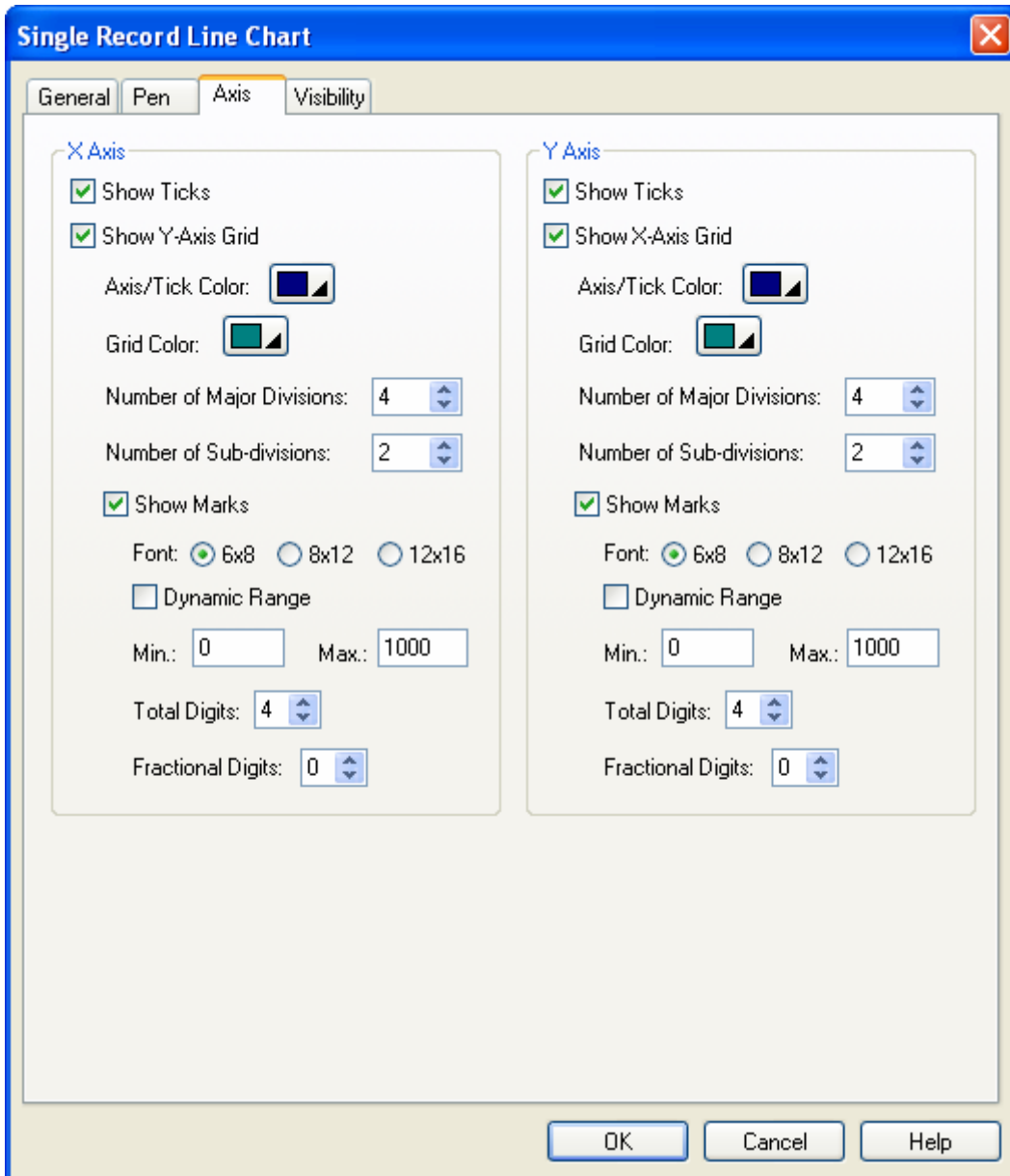
The following table describes each property in the Pen page.

Property		Description							
Historic Data Pen	Min.	The minimum of the associated data set. This property is available when the Dynamic Range option is not selected.							
	Max.	The maximum of the associated data set. This property is available when the Dynamic Range option is not selected.							
	Mark Size	Select a size for the data point mark. The selection is valid when the Show Mark option in the General page is selected.							
	Line Style	Select a style for the connecting lines. The selection is valid when the Show Line option in the General page is selected.							
	Color	Select a color for the connecting lines.							
	Show Value	Select one of the following methods for displaying the selected data point value. <table border="1" data-bbox="438 645 1505 817"> <thead> <tr> <th>Show Value</th> <th>Description</th> </tr> </thead> <tbody> <tr> <td>(None)</td> <td>Does not display the data point value.</td> </tr> <tr> <td>Original</td> <td>Displays the data point value without modification.</td> </tr> <tr> <td>Scaled</td> <td>Displays the corresponding Y axis value of the data point.</td> </tr> </tbody> </table> <p>The selection is valid when the Show Cursor option in the General page is selected.</p>	Show Value	Description	(None)	Does not display the data point value.	Original	Displays the data point value without modification.	Scaled
Show Value	Description								
(None)	Does not display the data point value.								
Original	Displays the data point value without modification.								
Scaled	Displays the corresponding Y axis value of the data point.								
Reference Data Pen	Min.	The minimum of the associated data set. This property is available when the Dynamic Range option is not selected.							
	Max.	The maximum of the associated data set. This property is available when the Dynamic Range option is not selected.							
	Mark Size	Select a size for the data point mark. The selection is valid when the Show Mark option in the General page is selected.							
	Line Style	Select a style for the connecting lines. The selection is valid when the Show Line option in the General page is selected.							
	Color	Select a color for the connecting lines.							
	Show Value	Select one of the following methods for displaying the selected data point value. <table border="1" data-bbox="438 1283 1505 1456"> <thead> <tr> <th>Show Value</th> <th>Description</th> </tr> </thead> <tbody> <tr> <td>(None)</td> <td>Does not display the data point value.</td> </tr> <tr> <td>Original</td> <td>Displays the data point value without modification.</td> </tr> <tr> <td>Scaled</td> <td>Displays the corresponding Y axis value of the data point.</td> </tr> </tbody> </table> <p>The selection is valid when the Show Cursor option in the General page is selected.</p>	Show Value	Description	(None)	Does not display the data point value.	Original	Displays the data point value without modification.	Scaled
Show Value	Description								
(None)	Does not display the data point value.								
Original	Displays the data point value without modification.								
Scaled	Displays the corresponding Y axis value of the data point.								
Line segment color selectable individually	Check this option to set the line segment color individually in the following list window. The list window has three columns. The first column is line segment number. The second column is color setting for the data line. The third column is the color setting for reference line.								

12.5.6. Axis Settings

This section describes how to define the X axis and the Y axis for the single record line charts.

The following is an example of the Axis page.



The following table describes each property in the Axis page.

Property		Description
X Axis	Show Ticks	Check this option if you want the X axis to have ticks.
	Show Y-axis Grid	Select this option if you want the X axis to have vertical grids.
	Axis/Tick Color	Select a color for the X axis and its ticks.
	Grid Color	Select a color for the vertical grids.
	Number of Major Divisions	The number of major divisions for the X axis. The minimum you can specify is one.
	Number of Sub-divisions	The number of divisions between two adjacent major ticks. The minimum you can specify is one.
Mark	Show Marks	Check this option if you want the major ticks to have marks.
	Font	The font of the marks.
	Dynamic Range	Check this option if you want the minimum and maximum of the marks to be controlled by the dynamic range parameter block of the associated object at runtime.
	Min.	The minimum of the marks. It is a 32-bit integer.
	Max.	The maximum of the marks. It is a 32-bit integer.
	Total Digits	The total digits to be displayed for the marks.
	Fractional Digits	The number of fractional digits for the marks. For example, when the Maximum is 5000, the Total Digits is 4, and the Fractional Digits is 2, the mark for the Maximum will be 50.00.
Y Axis	Show Ticks	Check this option if you want the Y axis to have ticks.
	Show X-axis Grid	Select this option if you want the Y axis to have horizontal grids.
	Axis/Tick Color	Select a color for the X axis and its ticks.
	Grid Color	Select a color for the horizontal grids.
	Number of Major Divisions	The number of major divisions for the Y axis. The minimum you can specify is one.
	Number of Sub-divisions	The number of divisions between two adjacent major ticks. The minimum you can specify is one.
Mark	Show Marks	Check this option if you want the major ticks to have marks.
	Font	The font of the marks.
	Dynamic Range	Check this option if you want the minimum and maximum of the marks to be controlled by the dynamic range parameter block of the associated object at runtime.
	Min.	The minimum of the marks. You can specify a 32-bit signed integer.
	Max.	The maximum of the marks. You can specify a 32-bit signed integer.
	Total Digits	The total digits to be displayed for the marks.
	Fractional Digits	The number of fractional digits for the marks. For example, when the Maximum is 5000, the Total Digits is 4, and the Fractional Digits is 2, the mark for the Maximum will be 50.00.