



Project: EPM use manual

Objective:

Author: Ken (INVT)

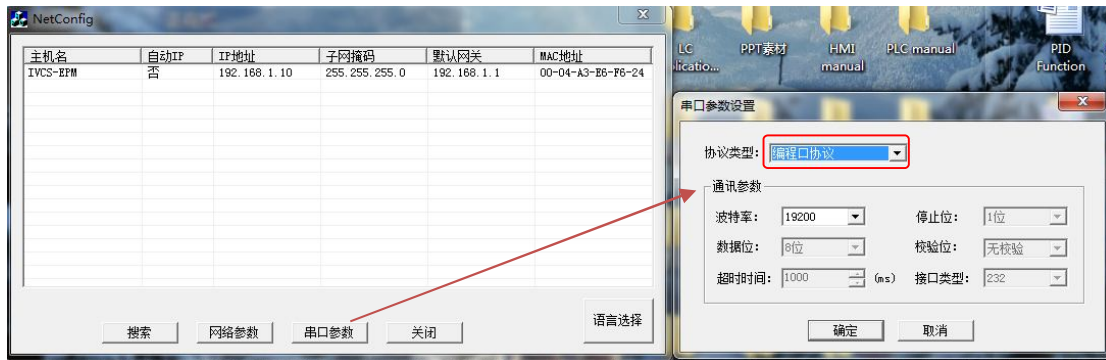
At first, close the wifi, use the Ethernet to connect from PC to EPM.

The PC setting as follow.

Open the location connect, click the attribute, in the attribute window select the "ICP/IPV4" and set the IP address by user.

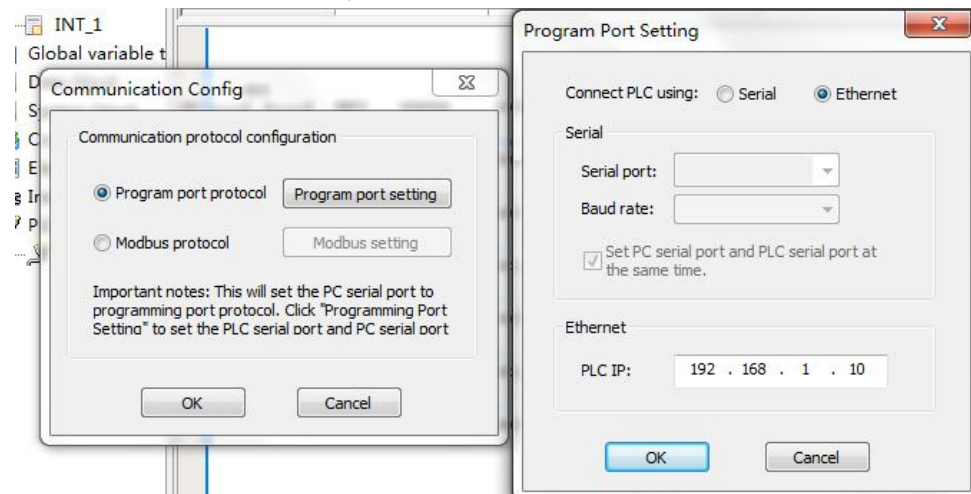


The next part, is to setting the EPM module.



The EPM setting as above, the others keep default.

In the "Auto Station", setting all follow.



Now, user can download the program and monitoring as USB.