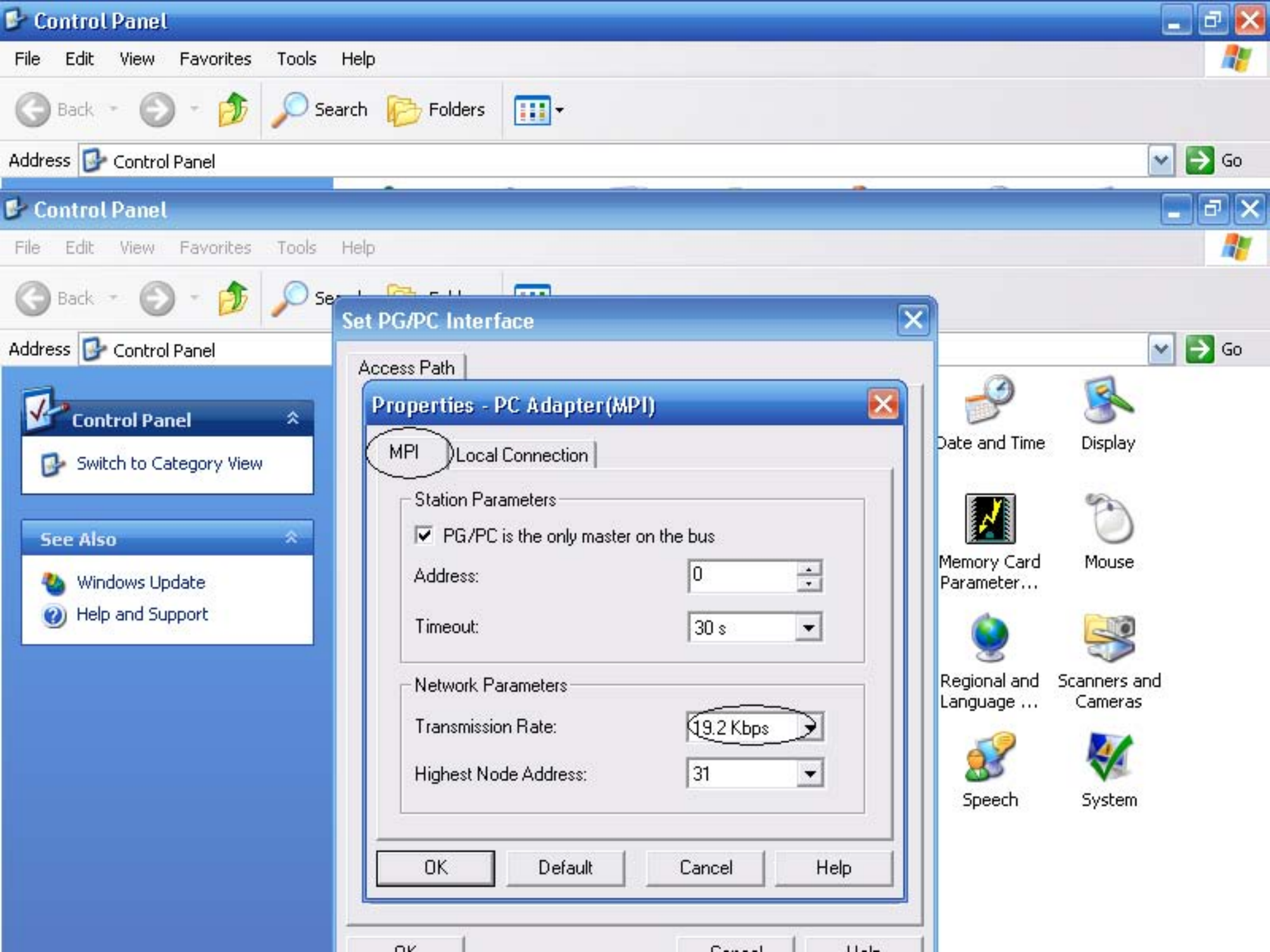


- S7_Pro3
 - SIMATIC 300 Station
 - SIMATIC 300 Station
 - S7 Program(2)
 - Sources
 - Blocks

Hardware CPU 313C



Set PG/PC Interface

Access Path

Properties - PC Adapter(MPI)

MPI Local Connection

Station Parameters

PG/PC is the only master on the bus

Address: 0

Timeout: 30 s

Network Parameters

Transmission Rate: 19.2 Kbps

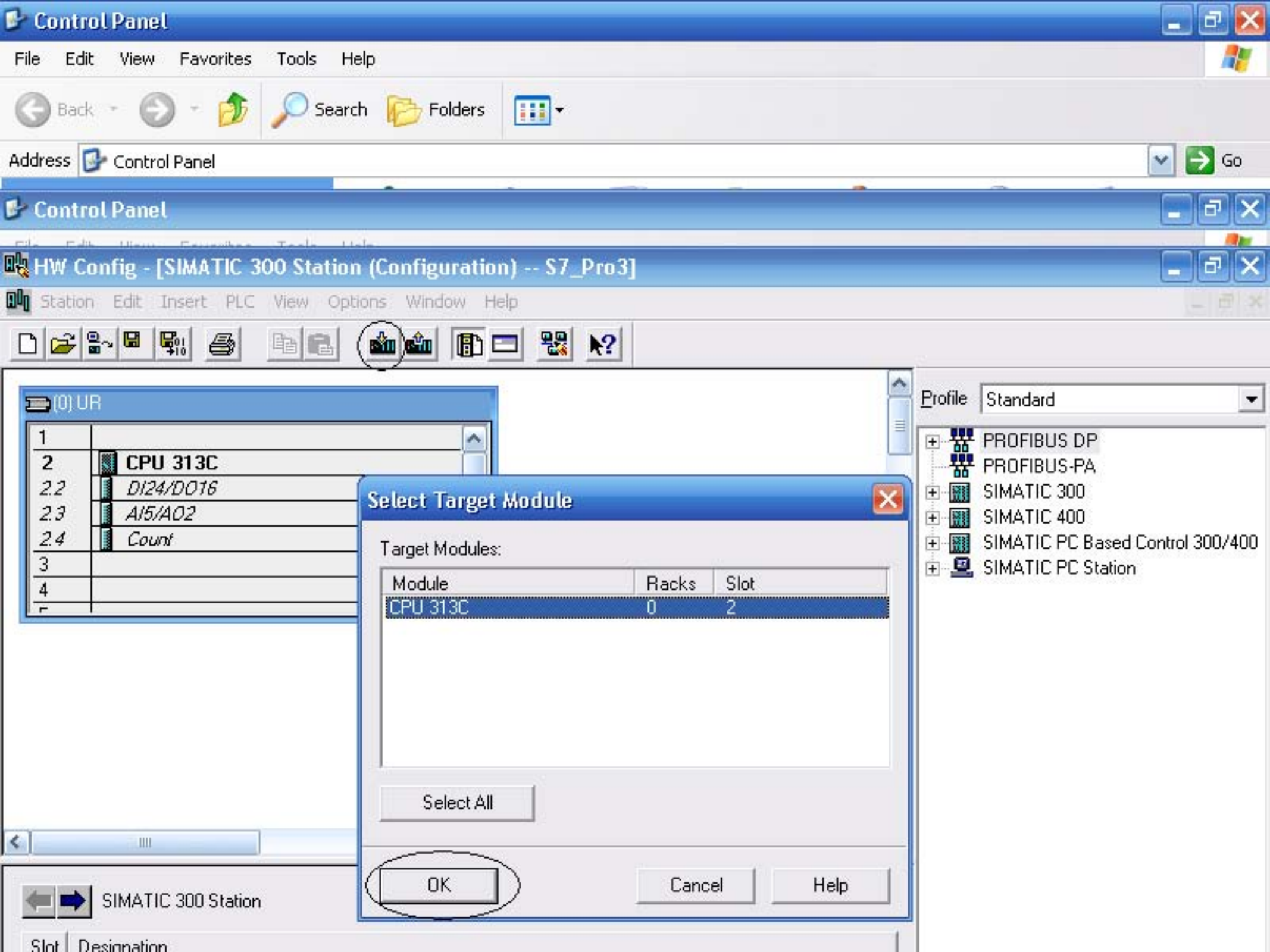
Highest Node Address: 31

OK

Default

Cancel

Help



- S7_Pro3
 - SIMATIC 300 Station
 - CPU 313C
 - S7 Program(2)
 - Sources
 - Blocks

Hardware

CPU 313C



(0) UR

1	
2	CPU 313C
2.2	DI24/DO16
2.3	AI5/AO2
2.4	Count
3	
4	
5	

- Profile Standard
- + PROFIBUS DP
 - + PROFIBUS-PA
 - + SIMATIC 300
 - + SIMATIC 400
 - + SIMATIC PC Based Control 300/400
 - + SIMATIC PC Station

(0) UR

Slot	Module	Order number	Firmware	MPI addr...	I ...	Q ...	C...
1							
2	CPU 313C	6ES7 313-5BE00-0AB0	V1.0	2			
2.2	DI24/DO16				124.. 124..		
2.3	AI5/AO2				752.. 752..		
2.4	Count				768.. 768..		
3							

PROFIBUS-DP slaves for SIMATIC S7, M7, and C7 (distributed rack)

Press F1 to get Help.



Properties - CPU 313C - (R0/S2)

- Time-of-Day Interrupts
- Cyclic Interrupt
- Diagnostics/Clock
- Protection
- Communication
- General
- Startup
- Cycle/Clock Memory
- Retentive Memory
- Interrupts

Short Description: CPU 313C

32 KB work memory; 0.1ms/1000 instructions; DI24/DO16; AI5/AO2 integrated; 3 pulse outputs (2.5 kHz); 3 channels counting and measuring incremental encoders 24 V (30 kHz); MPI connector; multi-tier configuration up to 31 modules; firmware V1.0

Order No./ firmware: 6ES7 313-5BE00-0AB0 / V1.0

Name: CPU 313C

Interface

Type: MPI

Address: 2

Networked: Yes

[Properties...](#)

Comment:

OK Cancel Help

(0) UR	
1	
2	CPU 313C
2.2	DI24/DO16
2.3	AI5/AO2
2.4	Count
3	
4	
5	

Slot	Module
1	
2	CPU 313C
2.2	DI24/DO16
2.3	AI5/AO2
2.4	Count
3	
4	
5	

IS DP
IS-PA
300
400
PC Based Control 300/400
PC Station



(0) UR	
1	
2	CPU 313C
2.2	DI24/DO16
2.3	AI5/AO2
2.4	Count
3	
4	
...	

Properties - CPU 313C - (R0/S2)

Time-of-Day Interrupts Cyclic Interrupt Diagnostics/Clock Protection Communication

Properties - MPI interface CPU 313C (R0/S2)

General Parameters

Address:

Highest address: 31

Transmission rate: 19.2 Kbps

Subnet:

--- not networked ---
MPI[1] 19.2 Kbps

New...
Properties...
Delete

OK

Cancel

Help

S DP
S-PA
300
400
PC Based Control 300/400
PC Station

Slot	Module
1	
2	CPU 313C
2.2	DI24/DO16
2.3	AI5/AO2
2.4	Count
...	



(0) UR	
1	
2	CPU 313C
2.2	DI24/DO16
2.3	AI5/AO2
2.4	Count
3	
4	
...	

Properties - CPU 313C - (R0/S2)

Time-of-Day Interrupts Cyclic Interrupt Diagnostics/Clock Protection Communication

Properties - MPI interface CPU 313C (R0/S2)

General Parameters

Address:

Highest address: 31

Transmission rate: 19.2 Kbps

Subnet:

--- not networked ---
MPI(1) 19.2 Kbps

New...
Properties...
 Delete

OK

Cancel

Help

S DP
 S-PA
 300
 400
 PC Based Control 300/400
 PC Station

Slot	Module
1	
2	CPU 313C
2.2	DI24/DO16
2.3	AI5/AO2
2.4	Count
...	

...aves for SIMATIC S7,
 M7, and C7 (distributed rack)

(0) UR	
1	
2	CPU 313C
2.2	DI24/DO16
2.3	AI5/AO2
2.4	Count
3	
4	
5	

(0) UR	
Slot	Module
1	
2	CPU 313C
2.2	DI24/DO16
2.3	AI5/AO2
2.4	Count
3	
4	
5	

Properties - CPU 313C - (R0/S2)

Time-of-Day Interrupts Cyclic Interrupt Diagnostics/Clock Protection Communication

Properties - MPI interface CPU 313C (R0/S2)

Properties - MPI

General Network Settings

Highest MPI address: 31 Change

Transmission rate:

- 19.2 Kbps
- 187.5 Kbps
- 1.5 Mbps
- 3 Mbps
- 6 Mbps
- 12 Mbps

OK

Cancel

Help

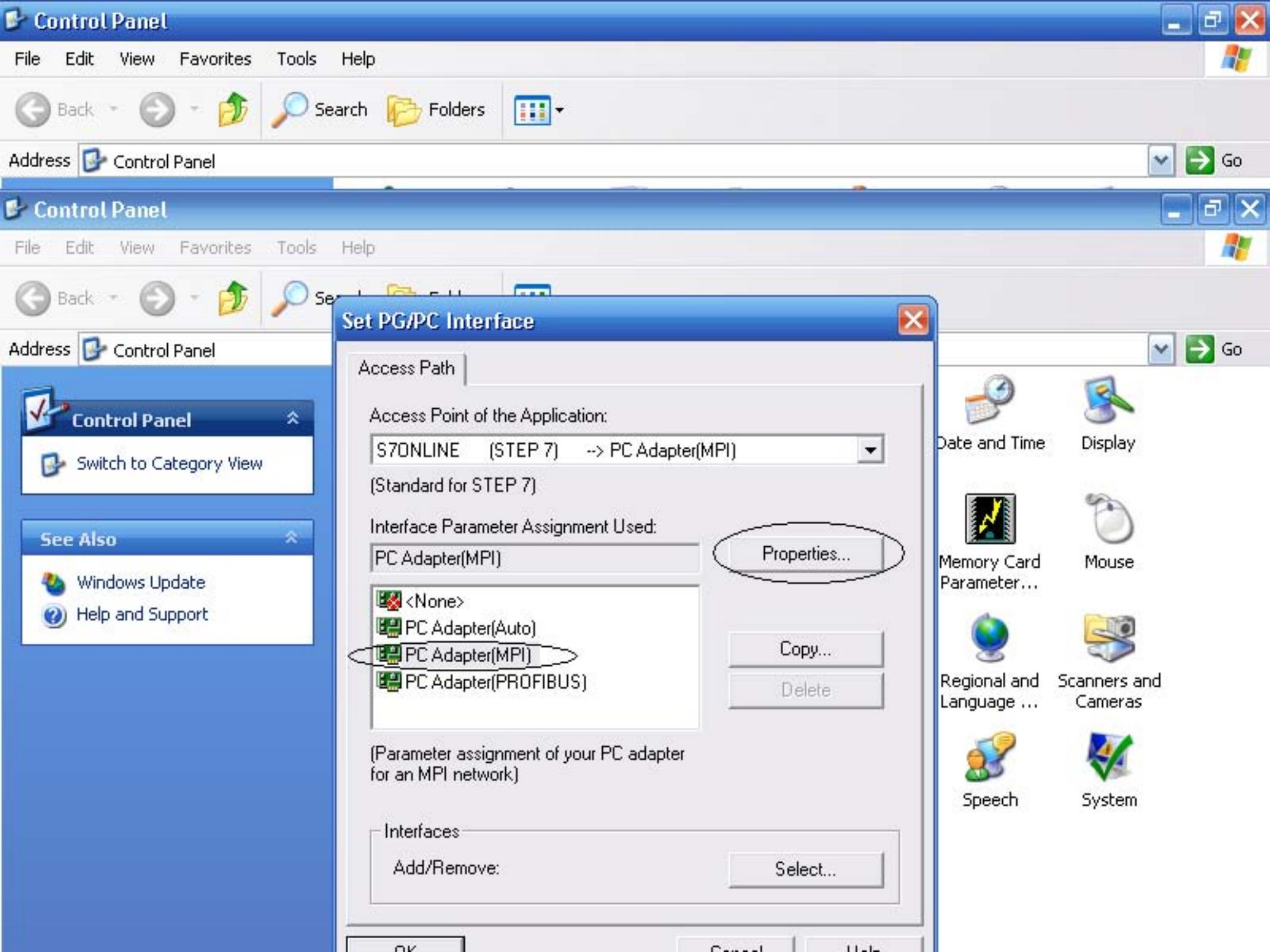
Control Panel

Switch to Category View

See Also

- Windows Update
- Help and Support

- | | | | | | | |
|------------------------|----------------------|---------------------|-------------------------|----------------------------------------------------------------|---------------------------|----------------------|
| Accessibility Options | Add Hardware | Add or Remov... | Administrative Tools | Automatic Updates | Date and Time | Display |
| Folder Options | Fonts | Game Controllers | Internet Options | Keyboard | Memory Card Parameter... | Mouse |
| Network Connections | Network Setup Wizard | Phone and Modem ... | Power Options | Printers and Faxes | Regional and Language ... | Scanners and Cameras |
| Scheduled Tasks | Security Center | Set PG/PC Interface | SIMATIC | Sounds and Speech | System | |
| Taskbar and Start Menu | User Accounts | Windows Firewall | Wireless Network Set... | <p>Configuration of your Siemens communications interfaces</p> | | |



Set PG/PC Interface

Access Path

Access Point of the Application:

S7ONLINE (STEP 7) --> PC Adapter(MPI)

(Standard for STEP 7)

Interface Parameter Assignment Used:

PC Adapter(MPI)

Properties...

<None>

PC Adapter(Auto)

PC Adapter(MPI)

PC Adapter(PROFIBUS)

Copy...

Delete

(Parameter assignment of your PC adapter for an MPI network.)

Interfaces

Add/Remove:

Select...

- Date and Time
- Display
- Memory Card Parameter...
- Mouse
- Regional and Language ...
- Scanners and Cameras
- Speech
- System